



Das Auto.

# The New Beetle







**Enjoy getting to know  
the New Beetle.**



A red Volkswagen Beetle is shown from a rear three-quarter view, driving on a curved, light-colored road. The car is positioned in the lower right quadrant of the frame. The background features a modern, white architectural structure with curved walls and a large, white pillar. To the left, there is a lush green landscape with trees and a bright light source, possibly the sun, creating a lens flare effect. The overall scene is bright and clean, with a focus on the car's design and the surrounding environment.

**05 The New Beetle**

- 23 Exterior and wheels
- 25 Interior
- 30 Comfort
- 32 Safety
- 33 Multimedia
- 34 Engines, running gear and gearbox
- 35 Equipment packages
- 37 Volkswagen Genuine Accessories
- 41 Paint finishes, seat upholstery and combinations of colours
- 47 Service



**Some claim that stepping out of line is one of their favourite pastimes.**





A yellow Volkswagen Beetle is shown from a front-three-quarter perspective, driving on a city street. The car is in motion, as indicated by the blurred background. The background features modern, curved buildings with metallic finishes and large glass windows. The sky is blue with some light clouds. The car's license plate is 'WOB NB 205'.

**The end of the right angle is near.**



**Sound familiar?  
Whatever you do, somehow you  
always attract attention.**







**From 0 to 100 in 0.6 seconds –  
to reach your feeling of happiness.**







**Life is not just black and white either.**







**This is just a car.  
And the earth is flat.**





**Joie de vivre. Available in 12 colours.**





## Exterior and wheels.

Most things take a great many years, if at all, to rank as classics but the New Beetle already does. With its timeless rounded contours the New Beetle is an unmistakable designer object – and is much more besides. It combines harmony in design with cutting edge engineering, exemplary safety and advanced engine technology. No doubt about it – this classic vehicle is a state-of-the-art car.



The electric sliding/tilting glass roof can be tilted in a matter of moments to let in light and fresh air, independent of the weather. Tinted glass provides adequate protection from the sun.



The third brake light with LED technology is neatly integrated in the rear lid and increases visibility on the road. It lights up in a flash when the vehicle is braked and therefore improves the reaction times of other road users.

- standard
- optional extra





Narrow gaps around the front head-lights indicate the uncompromisingly good workmanship and exact, precision fit of all body parts.



The attractive tail lights with integral turn signals are an eye-catching highlight of the exterior design. They have a very convenient feature: the turn signals flash three times at one tap of the indicator lever.

### Interior.

Enjoy an interior design with pleasing rounded contours which is anything but ordinary – how many cars have their very own flower vase? All switches and controls have been designed with great attention to detail and are in line with the latest ergonomic findings. The texture fulfils the promise of the high-quality appearance. Welcome to the New Beetle.



The storage compartment in the head-lining provides practical stowage space for everything that has to be quick to hand.

Not in conjunction with sliding/tilting glass roof.



Distinctive full wheel trim on the 15 inch steel wheel with size 195 tyre gives the New Beetle an unmistakable appearance.



The 16 inch wheel package with 6 1/2 J x 16 wheels and 205/55 R 16 tyres also includes a set of full wheel trim.

Standard on 110 kW.



The 6 1/2 J x 16 "San Antonio" alloy wheel has a size 205/55 R 16 tyre and a very refined look.



The bi-colour, bright finish 6 1/2 J x 16 "Houston" alloy wheel with size 205/55 R 16 tyre and 6-spoke design combines dynamics and elegance.



The 7 J x 17 "Acapulco" alloy wheel and size 225/45 R 17 tyre.



The 7 J x 17 "Sarasota" alloy wheel with bright finish and 225/45 R 17 tyre has a sporty, classic design.



The comfortable interior with "Luna" pattern cloth upholstery comes as standard with a 3-spoke steering wheel plus height and rake adjustment and power assisted steering, a height-adjustable driver's seat, and illuminated vanity mirrors in the sun visors. This attractive ambience is complemented by practical features such as two cup holders at the front. Colour-keyed door mirror housings and door handles round off the standard equipment and put the finishing touches to the striking exterior appearance.

■ standard  
■ optional extra

Our vehicles are equipped with summer tyres as standard. As of 1st May 2006 you are required by law in the Federal Republic of Germany to adapt the equipment of your vehicle, in particular the tyres, in wintry weather conditions. Your local Volkswagen Dealer will be pleased to advise you.





Generous space and first-class design are perfectly combined in the **interior** of the New Beetle. The cockpit offers an exceptional amount of space, not least of all due to the perfected ergonomics of all instruments, controls and the seats. After all, interior design plays an important part in the subjective well-being of passengers. For example, the steering column can be adjusted for height and reach, and can easily be adjusted to suit the driver. The seats have been designed to be comfortable for passengers of varying stature, even on long journeys. Balanced ergonomics make a contribution to safety as clearly arranged instruments and controls help drivers to find all

functions easily so that they can concentrate entirely on traffic on the road. The leather trim shown here has an attractive appearance and practical advantages as well. Natural leather breathes, is pleasantly soft and is an easy care material. Leather trim can include either heated sports or de luxe seats at the front. With this equipment option, the gear lever knob, handbrake lever grip and steering wheel are also covered with fine leather.





Well thought-out vehicle interior ergonomics are essential for a relaxed posture while driving. The **steering column** therefore has a **height and rake adjustment** so that it can be flexibly adapted to your stature and preferred sitting position.



You always have your glasses at the ready in the **spectacles compartment in the headlining** on the driver's side. The pocket has a soft lining to protect the contents and prevent rattling noises.



Modern design: the attractive design of the interior **door handles** mirrors the rounded exterior contours of the New Beetle.



The **air vents** have an infinite adjustment and fine chrome ring surrounds.



The **leather-covered gear lever knob** and **handbrake lever grip** have an elegant appearance and very good grip.

Standard on 110 kW.



The **cup holder** makes for a relaxing journey as your drinks reliably stay there where they belong.



The **height-adjustable front passenger seat** can be infinitely and easily adjusted to your stature for a relaxed sitting position.

■ standard

■ optional extra



## Comfort.

First impressions are by no means final – sometimes it is the second or third impression that is decisive. The New Beetle therefore does everything to be not only pleasing to the eye but also to let you enjoy the highest possible comfort – every inch of the way.



The **ParkPilot** has sensors in the rear bumper. During parking, acoustic and visual signals are given to warn of obstacles. The warning tone becomes more rapid as obstacles are approached.



Blue illumination for the **adjustable instrument cluster** and instruments in the cockpit make them easy to read, independent of lighting conditions.



As of 30 kph **cruise control** keeps the speed at the level selected by you without you having to depress the accelerator. Cruise control is switched off again automatically as soon as the brakes or clutch are operated.



The **remote control release for the fuel flap and luggage compartment opener** are very practical features. This means that you do not have to get out of the vehicle to open the boot or fuel flap for others.



An easy to read **digital clock with outside temperature display** is integrated in the frame of the front windscreen.



The **easy entry function** makes access easier for rear passengers as the front seats slide smoothly forwards.

The **sports seats at the front** have a classic, sporty look and a high level of functionality as they are made of extremely high quality materials. The robust fabrics provide the best possible protection against wear and dirt, and the seat shell provides adequate support for your back, especially in the lumbar region. You will appreciate the additional comfort offered by these seats on long, demanding journeys in particular.



The **“Climatic” air conditioner** has easy operation and assures a pleasant interior temperature within a very short time. It therefore makes an important contribution to your safety as heat can considerably impair concentration while driving. The **“Climatic” air conditioner** naturally operates without climate-unfriendly CFC.



## Safety.

You not only feel secure in a New Beetle – you are. With its comprehensive safety package the New Beetle ranks as one of the safest vehicles in its class and therefore gives you a reassuring feeling of security. After all, you not only want a car to have an attractive appearance but also to take you safely to your destination.



The combined head and side airbag system for the driver and front passenger is housed in the sides of the front seats. The airbags are triggered within a few milliseconds in the event of a collision and are filled by a gas generator.

## Multimedia.

This car is not only pleasing to the eye but also music to your ears. Your favourite music is always at the ready with a CD player and sound is delivered by six speakers altogether. Should this not be enough for you – you can, as an option, connect your iPod.



Provision for a mobile phone includes a hands-free facility and radio muting, and can be combined with many mobile phones generally available.

A mobile phone cradle is not included in the specification.



Door entry reflectors on the interior door panel trim are an additional safety factor in traffic as drivers of cars behind can immediately see when you open the door.



The electronic stabilisation programme (ESP) prevents the vehicle breaking away in critical situations through targeted intervention in the brake and engine management to assure maximum directional stability.



The safety-optimised head restraints are height-adjustable and minimise the risk of strain on the neck muscles in the event of a collision.



The MP3 compatible “gamma Volkswagen Sound” radio has eight loudspeakers, output of 4 x 20 watts, a 30-station memory, and traffic information memory (TIM).



“Volkswagen Individual” provision for an iPod\* in the front centre armrest has many adapters so that it is compatible with the iPod G3, iPod G4 and the nano, photo, mini, classic and video iPods.



The front passenger’s airbag can of course be deactivated – this is particularly important if you want to instal a child’s seat on the front passenger side.



The anti-lock brake system (ABS) retains the steerability of the vehicle when full braking is applied, even on slippery surfaces. To give other road users due warning, the hazard warning system is activated at the same time.



The CD changer in the front centre armrest helps you to put on audio CDs and can take up to six discs.

■ standard

■ optional extra

\* Track display is not supported. iPod is not included in the specification. Only available with the “gamma CD” radio system. Feature offered by Volkswagen Individual GmbH. It relates to the German market. Your local Volkswagen Dealer will be pleased to give you details of the differences in your specific country. Please refer to [www.volkswagen-individual.de](http://www.volkswagen-individual.de) for further information.



## Engines, running gear and gearbox.

However appealing the outward appearance is, no-one should miss taking a look at the powerful engines at the heart of the New Beetle. They have not only impressive power but also convincing consumption figures. Why therefore wait for life to come to you when you can drive to meet it?



Direct diesel injection assures high pulling power for the **TDI engines** and, at the same time, low consumption coupled with minimal emissions. The exhaust turbocharger makes high engine output possible, even with small cubic capacity.

## Consumption and CO<sub>2</sub> emissions

		<b>55 kW (75 bhp)</b>	<b>75 kW (102 bhp)</b>	<b>85 kW (115 bhp)</b>	<b>110 kW (150 bhp)</b>
<b>Petrol engines</b>					
<b>Fuel consumption, litres/100 km*</b>	with manual gearbox:	5-speed	5-speed	5-speed	5-speed
	urban	9.3	10.3	11.9	11.0
	extra-urban	5.8	5.9	6.8	6.4
	combined	7.1	7.5	8.7	8.1
	with automatic gearbox:	–	6-speed	6-speed	6-speed
	urban	–	11.3	13.3	12.6
	extra-urban	–	6.1	6.9	6.7
	combined	–	7.9	9.2	8.9
<b>CO<sub>2</sub> emissions combined, g/km*</b>	with manual gearbox:	169	180	210	194
	with automatic gearbox:	–	189	222	210

		<b>77 kW (105 bhp) TDI with unregulated diesel particulate filter</b>
<b>Diesel engine</b>		
<b>Fuel consumption, litres/100 km*</b>	with manual gearbox:	5-speed
	urban	6.8
	extra-urban	4.6
	combined	5.4
<b>CO<sub>2</sub> emissions combined, g/km*</b>	with manual gearbox:	143

\* The fuel consumption and emission figures have been determined in accordance with the version of EU directive 80/1268/EEC currently valid. Note in accordance with the version of directive 1999/94/EC which is currently valid: these figures do not refer to a particular vehicle and do not constitute part of the offer but are purely for comparison purposes between the various types of vehicle. In addition to the fuel efficiency of a car, driving behaviour as well as other non-technical factors play a role in determining a car's fuel consumption and CO<sub>2</sub> emissions. CO<sub>2</sub> is the main greenhouse gas responsible for global warming. A guide on fuel consumption and CO<sub>2</sub> emissions which contains data for all new passenger car models is available free of charge at every point of sale in the European Union and, for prospective buyers in Germany, at DAT Deutsche Automobil Treuhand GmbH, Hellmuth-Hirth-Strasse 1, 73760 Ostfildern.

■ standard  
■ optional extra

## Equipment packages.

There are many ways to make an individual car unique. A number of very practical features have been combined in our packages, as equipment items that are already useful on their own are often even more so when put together in packages.



Creates additional space: the **Pack and Go package** with nets on the door panel trim, centre console and in the luggage compartment, and pockets on the reverse of the front seats.



The **Winter package** equips your New Beetle for cold days in particular. The **automatically heated front windscreen washer jets** are also ready for operation in frost to keep the windscreen clear of ice and dirt. The Winter package includes heated front seats and fog lights as well.



**Fog lights** belong to the **Winter package**. They improve illumination of the road in conditions of poor visibility and are therefore to be recommended as part of the safety equipment.



**Heated front seats** are a welcome feature for your comfort on cold winter days. They are included in the **Winter package** together with a headlight cleaning system, heated front windscreen washer jets and a warning lamp for the washer fluid level.





The **electric windows** in the **De luxe package** conveniently regulate the supply of fresh air. They have an important anti-trap feature for your safety: as soon as resistance is registered between the window and frame, the window is lowered a short distance.



The **Technical package** includes an **anti-theft warning system** with interior monitoring. With the help of sensors, the system reacts if there is any manipulation on the bonnet, doors or rear lid.



Comprehensive safety at the touch of a button: **central locking with radio remote control** has two folding remote control keys. It is also part of the **Technical package**.

## Volkswagen Genuine Accessories.

Volkswagen Genuine Accessories stand for assured quality and optimum functionality. A high-grade vehicle like a Volkswagen fulfils your exacting requirements in respect of function and design. Volkswagen Genuine Accessories are produced in line with the same criteria as they are created in close cooperation with the development and design departments in Wolfsburg. They are therefore optimally matched to your Volkswagen.

Volkswagen Genuine Accessories are available for the German market. Your local Volkswagen Dealer will be pleased to give you details of the differences in your specific country. You can obtain additional information from [www.volkswagen-zubehoer.de](http://www.volkswagen-zubehoer.de).



The **stainless steel sports rear silencer** with two 76 mm tailpipes puts the finishing touches to the overall visual impression.



With the **De luxe package** you receive not only a comfortable **front centre armrest** with integrated storage box and provision for a CD changer but also electric front and rear windows, and central locking with practical radio remote control.



The **Seats de luxe package** includes storage pockets on the reverse of the front seats and an easy entry function which makes access easier for rear passengers as the front seats slide smoothly to the front.



The **roof edge and tailgate spoiler** complement each other in an ideal way which above all results in aerodynamic advantages on the New Beetle – and adds a distinctly sporty look.

Not for 110 kW.





The **basic carrier** can be fitted quickly and easily to the New Beetle and is the basis for all roof attachments. The mechanism is of galvanised sheet steel with a theft-deterrent fastener. Net weight: approx. 6 kg. Max. roof load: 50 kg.



The **cycle carrier** of aerodynamically shaped plastic profiles with a frame holder of matte, chromium-plated steel is lockable and has been city crash tested.



The lockable **cycle carrier for the tow bar** can take up to two bicycles. It is fitted to the ball head of the tow bar and, depending on the nose weight of the tow bar, has a carrying capacity of up to 15 kg per wheel rail.

The **Genuine Volkswagen V-Protector** is a package of transparent film to protect the vehicle from stone impact, damage through corrosion, and scratch marks. It contributes towards value retention and is tailor-made for the New Beetle. The film can be removed without leaving residue even after a number of years. The package contains film for the front bumper, mirror caps, door handle recesses, door edges and loading edge.



The robust **roof box** is made of high-grade plastic and has convenient handling. It can easily be secured to the vehicle roof with practical quick-release fasteners. The innovative “DuoLift” system enables the roof box to be opened from either side for ease of loading and unloading, and 3-point central locking increases anti-theft protection. The new roof boxes are available with a volume of 310, 340 and 460 litres.



The **sun shade** for the rear window protects rear passengers from direct radiation from the sun without impairing the view to the rear and therefore road safety.



The lockable “**comfort**” **ski and snowboard holder** can carry up to six pairs of skis or four snowboards safely and conveniently. A practical pull-out function helps take the effort out of loading and unloading.

■ standard  
■ optional extra





The **pedal cap set** highlights the front footwell with non-slip pedal caps of high-quality, brushed stainless steel. The set is available for all vehicles with manual gearbox.



The **luggage compartment liner** has a close fit, is flexible and non-slip. It protects the luggage compartment of your New Beetle and can be wiped clean. The transparent **loading edge protective film** fits exactly to protect the rear bumper when loading and unloading.



The **Bobsy G0-1 ISOFIX** is a safe seat system for children weighing up to 18 kg (up to approx. 4½ years of age). The seat can be firmly secured to the vehicle body using the ISOFIX connection on the base frame, but can also easily be used in vehicles without the ISOFIX system. The child's seat is approved for groups 0/1 and can therefore be used facing away from the direction of travel for children from birth. If fitted facing the direction of travel, the seat is approved for 9 to 18 kg. The harness has a height adjustment and the seat shell can be locked at six different angles.



The **Bobsy G2-3 pro** is the ideal genuine Volkswagen child's seat system for children between 3 and 12 years of age (15 to 36 kg). The seat cushion has a width adjustment and together with the slumber support provides perfect padding for the seat so that the belt has optimal routing and fits closely around the child's body. A high level of comfort and the best possible protection in the event of side impact is assured for both small and older children by the special headpiece, the sides which extend far to the front, and the complete protection of the shoulder area. The seat can be adjusted for height and angle – making for very comfortable travel even on long journeys. The covers can easily be removed and washed. The seat is secured via the 3-point belt.

## Paint finishes.

The intricate painting process applied by Volkswagen complies with the very highest requirements. Galvanisation provides reliable protection against corrosion as the basis for perfect paint coating. This gives the best possible protection against oxidation during the vehicle's entire lifetime – with a thickness of less than 20 millionths of a millimetre.



Salsa Red  
**solid paint**  
**4Y**



Black  
**solid paint**  
**A1**



Candy White  
**solid paint**  
**B4**



Sunflower  
**solid paint**  
**T1**



Harvest Moon Beige  
**solid paint**  
**V1**

■ standard  
■ optional extra





Platinum Grey  
metallic paint  
2R



Laser Blue  
pearl effect paint  
Y3



Reflex Silver  
metallic paint  
8E

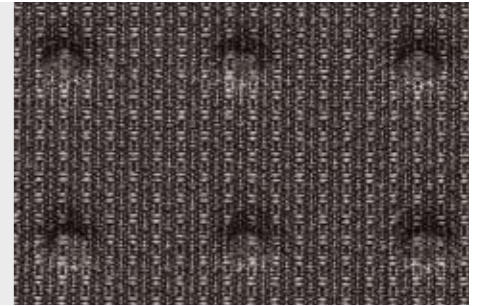
### Seat upholstery.

All upholstery choices in the range have two things in common: high-grade materials and uncompromisingly good workmanship. This can be seen for example by the very closely woven fabrics which give reliable protection against wear and are therefore extremely durable.



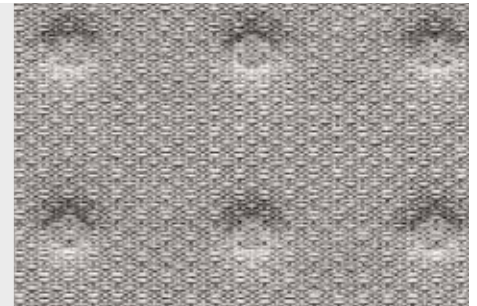
Gecko Green  
metallic paint  
8U

Black  
"Luna" cloth upholstery  
BS



Shadow Blue  
metallic paint  
P6

Flannel Grey  
"Luna" cloth upholstery  
BT



Heaven Blue  
metallic paint  
R2

Cream  
"Luna" cloth upholstery  
BU



Deep Black  
pearl effect paint  
2T

Mellow Yellow  
"Luna" cloth upholstery  
FQ



■ standard  
■ optional extra



Aquarius Blue  
"Luna" cloth upholstery  
FR



Flannel Grey  
sports seat upholstery in leather  
73



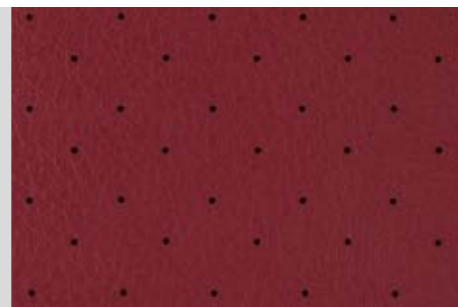
Black  
"Graphic" sports seat upholstery  
EU



Cream  
sports seat upholstery in leather  
74



Bordeaux Red, perforated  
leather seat upholstery  
98



Black  
sports seat upholstery in leather  
75



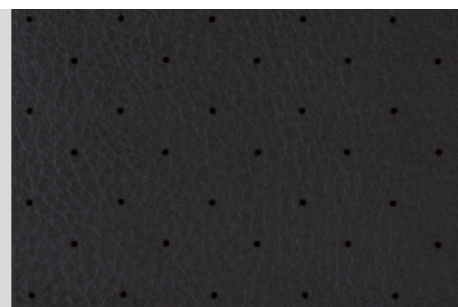
Flannel Grey, perforated  
leather seat upholstery  
ZC



Cream, perforated  
leather seat upholstery  
ZD



Black, perforated  
leather seat upholstery  
ZL



The illustrations on these pages can only be regarded as a general guide. The printing process cannot render the attractive paint finishes and seat upholstery with absolute accuracy.

■ standard  
■ optional extra



## Combinations of colours.

← Seat upholstery	← Carpeting	← Instrument panel top/bottom	← Salsa Red 4Y	← Black A1	← Candy White B4	← Sunflower T1	← Harvest Moon Beige V1	← Platinum Grey Metallic 2R	← Reflex Silver Metallic 8E	← Gecko Green Metallic 8U	← Shadow Blue Metallic P6	← Heaven Blue Metallic R2	← Deep Black Pearl Effect 2T	← Laser Blue Pearl Effect Y3
<b>“Luna” cloth upholstery ●</b>														
Black (BS)	Black	Black/Black	○	●	●	○	–	○	○	○	○	○	○	○
Flannel Grey (BT)	Flannel Grey	Black/Flannel Grey	○	●	●	○	–	○	○	○	○	○	○	○
Cream (BU)	Cream	Black/Cream	○	●	●	–	●	○	–	○	○	–	○	○
Mellow Yellow (FQ)	Flannel Grey	Black/Flannel Grey	–	●	●	–	–	○	○	–	–	–	○	–
Aquarius Blue (FR)	Flannel Grey	Black/Flannel Grey	–	●	●	–	–	○	○	–	○	○	○	–
<b>“Graphic” sports seat upholstery ○</b>														
Black (EU)	Black	Black/Black	○	●	●	○	–	○	○	○	○	○	○	○
<b>Leather seat upholstery ○</b>														
Bordeaux Red, perforated (98)	Black	Black/Black	–	●	●	–	–	○	○	–	–	–	○	–
Flannel Grey, perforated (ZC)	Flannel Grey	Black/Flannel Grey	○	●	●	○	–	○	○	○	○	○	○	○
Cream, perforated (ZD)	Cream	Black/Cream	○	●	●	–	●	○	–	○	○	–	○	○
Black, perforated (ZL)	Black	Black/Black	○	●	●	○	–	○	○	○	○	○	○	○
<b>Sports seat upholstery in leather ○</b>														
Flannel Grey (73)	Flannel Grey	Black/Flannel Grey	○	●	●	○	–	○	○	○	○	○	○	○
Cream (74)	Cream	Black/Cream	○	●	●	–	●	○	–	○	○	–	○	○
Black (75)	Black	Black/Black	○	●	●	○	–	○	○	○	○	○	○	○

The symbols next to the seat upholstery patterns show whether they are standard (●) or an optional extra (○). The symbols in the table show whether a paint finish is standard (●), an optional extra (○), or not available (–).

Some of the vehicles shown in this brochure are equipped with options at extra charge. All details of equipment and technical data are based on the features of the German market and are in accordance with the information available at the time of going to print. Your local Volkswagen Dealer will be pleased to give you details of the differences in your specific country. Subject to change without notice. TDI® is a registered trademark of Volkswagen AG and other companies in the Volkswagen Group in Germany and in other countries.

## Discover Volkswagen’s automotive world.



### The Autostadt – a journey to the world of mobility.

Collecting your new car from the Autostadt in Wolfsburg will be a memorable experience for you. In the course of your journey through the world of mobility you will get to know the various Volkswagen Group brands. You discover how an engine works, look at automotive milestones in the ZeitHaus museum, and watch in amazement as you see how easily the youngsters get their children’s driving licence. When the moment arrives that you can collect your vehicle, your personal adviser gives you your keys and all important details are explained to you before you start off on your journey home. Please call **0800 – 2 88 67 82 38** for full information.

**Volkswagen driving experience.** During driving and safety training our professional instructors show you how to deal with unforeseen situations on the road. Details can be obtained under **0800 – 8 93 83 68** or via the Internet: [www.volkswagen-driving-experience.de](http://www.volkswagen-driving-experience.de).

**Service guaranteed.** Wherever you are, you can take advantage of the comprehensive Volkswagen service offered at each of our approx. 2,500 Dealers in Germany. Please visit us or call free of charge under **0800 – VOLKSWAGEN (0800 – 86 55 79 24 36)**.

**Quality guaranteed.** In addition to the statutory warranty, you receive a 2-year Volkswagen guarantee\* for all new Volkswagen cars, a 3-year guarantee for paint on the bodywork\* and a 12-year guarantee against rusting through\*.

\* All details of the Volkswagen guarantee and of the Volkswagen paint and bodywork guarantee apply solely to vehicles of the Volkswagen brand in accordance with the current range of vehicles offered for the Federal Republic of Germany, and which are issued with a service booklet from Volkswagen AG for the German market. The services offered on these pages apply only to the German market. Your local Volkswagen Dealer will be pleased to give you details of the differences in your specific country.

**Mobility guaranteed.** Breakdown service, replacement car or overnight accommodation in a hotel. If you have your Volkswagen serviced regularly as recommended, you can enjoy the advantages of the LongLife mobility guarantee. The free emergency hotline can be reached under **0800 – 8 97 37 84 23**.

**Volkswagen Club.** Experience the Volkswagen brand first hand. You can, for instance, take a look behind the scenes and take part in exclusive events. Discover the latest Volkswagen models before their official launch, take advantage of the special conditions offered by our associates, and collect loyalty points. Detailed information is available from your Volkswagen Dealer, on the free hotline **08000 – VW CLUB (08000 – 89 25 82)** and via the Internet [www.vw-club.de](http://www.vw-club.de).

**Volkswagen TeleCom.** With a Volkswagen TeleCom mobile phone card you can be reached in Germany and in many other countries in and outside Europe. Please refer to [www.volkswagen-telecom.de](http://www.volkswagen-telecom.de) for details.

**Volkswagen Bank.** The services offered by Volkswagen Bank are tailor-made for you and your new Volkswagen. Our special packages combine up-to-date forms of financing or leasing with comprehensive insurance protection and therefore offer you peace of mind. Further information can be obtained from [www.volkswagenbank.de](http://www.volkswagenbank.de) and from your Volkswagen Dealer.



# The New Beetle

915.1196.05.18 · Printed in Germany

Subject to change without notice

Issue: June 2009

Internet: [www.volkswagen.de](http://www.volkswagen.de)

■

■

Your Volkswagen Dealer

■