



Das Auto.

The New Beetle Cabriolet



For all those who want to be a bit closer to heaven.

05 The New Beetle Cabriolet

- 27 Exterior
- 30 Wheels
- 31 Interior
- 36 Safety
- 38 Comfort
- 41 Multimedia
- 43 Engines, running gear and gearbox
- 44 Equipment packages
- 46 Volkswagen Genuine Accessories

- 48 Paint finishes, seat upholstery, hoods and combinations of colours
- 56 Service



A low-angle, upward-looking photograph of a large, mature tree with a thick, gnarled trunk and a dense canopy of bright green leaves. Sunlight filters through the branches, creating a dappled light effect. The sky is visible through the gaps in the foliage.

**He loves me.
He loves me not.
He loves me.
He loves me not.**

He loves me.






Everyday routine?



Completely forgotten.

A wide-angle photograph of a sunset over the ocean. The sun is low on the horizon, creating a bright glow and a rainbow in the sky. The sky is filled with soft, white and grey clouds. The ocean is dark blue with white-capped waves breaking in the foreground. The overall mood is serene and romantic.

**Time for some sweet words:
chocolate ice cream, kissing lips, shooting star,
buttercup, butterfly...**

...freedom.



I love the feeling of being in the New Beetle Cabriolet ...



**Go surfing, light the barbecue, play the guitar, enjoy yourself.
Or go surfing, light the barbecue, enjoy yourself.
Or just enjoy yourself.**





A good outlook is standard.





Exterior.

Just like its classic exemplar, the New Beetle Cabriolet is a best-selling open-top car that already ranks as a classic. The New Beetle Cabriolet stands for timeless design and joie de vivre – with no upward limit to driving enjoyment. The extremely robust hood is suitable for all year round use, has easy operation – and opens up the world for you at the touch of a button.



The classic cover at the rear provides weather protection for the hood and rounds off the attractive silhouette of the New Beetle Cabriolet.



The electric-hydraulic textile hood can be opened and closed in only 13 seconds once it has been released manually. A heated rear window of glass is integrated in the hood. When closed, the hood fits closely so that outside noise and driving noise are hardly audible. Top quality and exacting requirements for material and workmanship assure the hood's exceptional resistance to wear, weather factors and car wash brushes.

- standard
- optional extra



The colour-keyed, **electrically folding door mirrors** have integral turn signals for good visibility on the road.



The stylish, colour-keyed **sills** of the New Beetle Cabriolet underline the sporty look.



A special feature of the **wings**: they are slightly flattened at the sides, adding emphasis to the dynamic, elegant appearance.



The multi-layer **textile hood** which is suitable for all year round use can be opened and closed easily and quickly as the release handle can be operated in a matter of moments. It naturally has a heated rear window of glass, a hood indicator lamp in the front windscreen frame, and all materials used are of uncompromising quality.



Great attention was paid to harmony in the design of the New Beetle Cabriolet – down to the last detail. For example, all models have **colour-keyed bumpers**, and the styling of the headlights and front turn signals blends perfectly with the overall appearance.

■ standard
■ optional extra

Wheels.

Whether you are off to the beach, to town or just want to enjoy the fresh air – the right wheels will put the finishing touches to the appearance of your New Beetle Cabriolet. Choose a wheel package to suit your style from the wide range of steel and elegant alloy wheels.



Distinctive full wheel trim on the **15 inch steel wheel** with size 195 tyre gives the New Beetle Cabriolet an unmistakable appearance.



The **16 inch wheel package** with 6½ J x 16 wheels and 205/55 R 16 tyres also includes a set of full wheel trim.

In conjunction with the Highline package. Standard on 110 kW.



The 6½ J x 16 "**Houston**" alloy wheel with bright finish and size 205/55 R 16 tyre has a 6-spoke design combining dynamics and elegance.



The 6½ J x 16 "**San Antonio**" alloy wheel has a size 205/55 R 16 tyre and a very refined look.



The 7 J x 17 "**Acapulco**" alloy wheel and size 225/45 R 17 tyre.



The 7 J x 17 "**Sarasota**" alloy wheel with bright finish and 225/45 R 17 tyre has a sporty, classic design.

Not for 55 kW.

You can equip your New Beetle Cabriolet for winter driving with optional **all-weather tyres**, **winter tyres** with steel wheels and robust full wheel trim, or you can opt for alloy wheels. Spare wheel packages are also included in the range. The spare wheels offered always have standard sized tyres and are made of either steel or alloy.

■ standard
■ optional extra

Interior.

You will feel at ease straightaway in your New Beetle Cabriolet. The characteristic flower vase and the atmosphere created by first-class workmanship, high-quality materials and the many attractive equipment features help you to get away from it all. Every journey in your New Beetle Cabriolet is like a short holiday trip.



The **cup holder** makes for a relaxing journey as your drinks reliably stay there where they belong.



The comfortable **interior** with "**Luna**" pattern cloth upholstery comes as standard with central locking plus radio remote control, a 3-spoke steering wheel with power assisted steering, a height-adjustable driver's seat, and electric windows. This attractive ambience is complemented by practical features such as two cup holders at the front and an "easy entry" function. Colour-keyed door mirrors and door handles round off the standard equipment of your New Beetle Cabriolet and complete the impressive exterior appearance.

Our vehicles are equipped with summer tyres as standard. As of 1st May 2006 you are required by law in the Federal Republic of Germany to adapt the equipment of your vehicle, in particular the tyres, in wintry weather conditions. Your local Volkswagen Dealer will be pleased to advise you.



Generous space and first-class design are perfectly combined in the interior of the New Beetle Cabriolet, shown here with optional leather trim. In contrast to many other cabriolets, the New Beetle Cabriolet is a fully-fledged four-seater and there is enough room for all occupants to enjoy a comfortable, uncramped journey. The cockpit offers an exceptional amount of space, not least of all due to the perfected ergonomics of all instruments, controls and the seats. After all, interior design plays an important part in the subjective well-being of passengers.

For example, the steering column can be adjusted for height and reach, and can easily be adjusted to suit the driver. The seats have been designed to be comfortable for passengers of varying stature, even on long journeys. Balanced ergonomics make a contribution to safety as clearly arranged instruments and controls help drivers to find all functions easily so that they can concentrate entirely on traffic on the road.

■ standard
■ optional extra



Elegant **leather trim** gives your New Beetle Cabriolet a very exclusive ambience. Classic, elegant leather has a number of practical advantages – it is an easy-care material which breathes and is pleasantly soft. Leather trim can include either heated sports or de luxe seats at the front. With this option, the gear lever knob, handbrake lever grip and steering wheel are also covered with fine leather.



The **flower vase** ensures a pleasant, welcoming atmosphere in the cockpit. This accessory has long since achieved cult status.



The robust **storage pockets on the doors** have easy access and help you to keep the interior tidy with plenty of room for maps, beverages, and more besides.



Items needed during the journey can be kept at the ready in the **front centre armrest's roomy storage box**.



The **height-adjustable front passenger seat** can be infinitely and easily adjusted to your stature for a relaxed sitting position.

Standard on 110 kW.

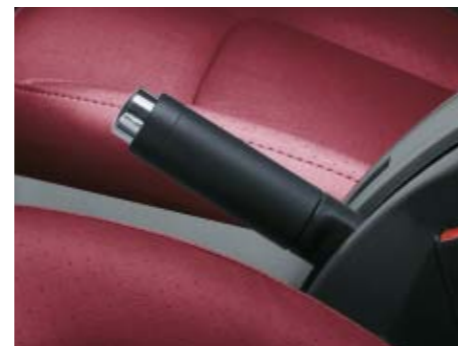


The seats with **centre and side panels in leather** promise outstanding sitting comfort.



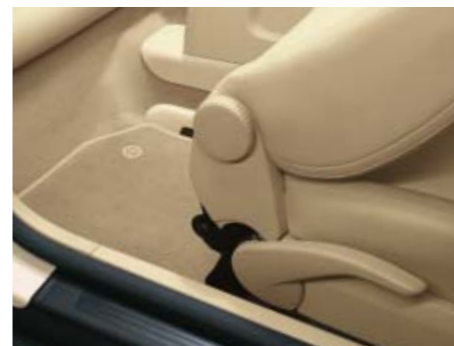
The **leather-covered gear lever knob** has an elegant appearance and a good grip.

Standard on 110 kW.



Leather trim is completed by a **leather-covered handbrake lever grip**.

Standard on 110 kW.



The **easy entry function** makes access easier for rear passengers as the front seats slide smoothly forwards.

Standard on 110 kW.



The rear bench seat has a practical, lockable **through-loading facility** to transport skis, snowboards and other long items of luggage.



Textile floor mats at front and rear protect the interior of your New Beetle Cabriolet and contribute to its irresistible ambience.

Standard on 110 kW.

■ standard
■ optional extra

Safety.

Open-top driving and all-round safety. The New Beetle Cabriolet makes no compromises when it comes to safety – no matter whether the hood is open or closed. Many active and passive safety systems ensure that you can always concentrate on just one thing: your driving enjoyment.



The **third brake light** with LED technology is neatly integrated in the rear lid and increases visibility on the road. It lights up in a flash when the vehicle is braked and therefore improves the reaction times of other road users.



Fog, snowfalls, dust or heavy rain: **fog lights** improve illumination of the road in conditions of poor visibility and are therefore to be recommended as part of the safety equipment.

Standard on 110 kW.



The **anti-lock brake system (ABS)** retains the steerability of your New Beetle Cabriolet when full braking is applied, even on slippery surfaces. To give other road users due warning, the hazard warning system is activated at the same time.



The **electronic stabilisation programme (ESP)** prevents the vehicle breaking away in critical situations through targeted intervention in the brake and engine management to assure maximum directional stability.



Should the worst come to the worst the **active roll-over protection system** is extended automatically within a very short time to give all passengers the best possible protection. A release system enables the supports to extend up to 265 millimetres within 0.25 seconds. The system operates when the hood is open and when closed, and is integrated behind the rear seat backrests. A reinforced wind-screen frame completes the safety equipment.



The combined **head and side airbag system** for the driver and front passenger is housed in the sides of the front seats. The airbags are triggered within a few milliseconds in the event of a collision and are filled by a gas generator.

Comfort.

The New Beetle Cabriolet does all it can for your all-round well-being – with great attention to even small details which add to your driving pleasure. Fresh air is always taken care of – either with the hood down or simply by using the air conditioner.



The **ParkPilot** emits acoustic signals during parking to warn of any obstacles there may be. The warning tone becomes more rapid as obstacles are approached. This is made possible by ultrasonic sensors in the bumpers.



Practical: **illuminated vanity mirrors** are integrated in the sun visors so that you can check your appearance even in poor light conditions.



A **reading light** in the rear view mirror provides pleasant light inside the New Beetle Cabriolet when it is dark.



An easy to read **digital clock with outside temperature display** is integrated in the frame of the front windscreen.



The **windbreak** protects you from turbulence in the neck area. This is particularly of advantage at high speeds as excessively strong wind turbulence is unpleasant and can impair your driving safety.



The **release handle for the textile hood** is easily accessible in the headlining and locks or unlocks the hood in next to no time.



Fresh air at the touch of a button: the **control for the electric hood** is in the centre console and opens the hood of the New Beetle Cabriolet in only 13 seconds.



Well thought-out vehicle interior ergonomics are essential for a relaxed posture while driving. The **steering column** therefore has a **height and rake adjustment** so that it can be flexibly adapted to your stature and preferred sitting position.



The **electric windows** conveniently regulate the supply of fresh air. They have an important anti-trap feature for your safety: as soon as resistance is registered between the window and frame, the window is lowered a short distance.



The **air conditioner** has easy operation and assures a pleasant interior temperature within a very short time. It therefore makes an important contribution to your safety as heat can considerably impair concentration while driving.



As of 30 kph **cruise control** keeps the speed at the level selected by you without you having to depress the accelerator. Cruise control is switched off again automatically as soon as the brakes or clutch are operated.

Not for 55 kW.



Blue illumination for the **adjustable instrument cluster** and instruments in the cockpit make them easy to read, independent of lighting conditions.



The **remote control release for the fuel flap and luggage compartment opener** are very practical features. This means that you do not have to get out of the vehicle to open the boot or fuel flap for others.

Multimedia.

What would a Cabriolet trip be without the right music? You can choose whether you would prefer to listen to music from your CD collection or from an iPod for instance. No matter what you decide on, the New Beetle Cabriolet will be music to your ears.



The genuine leather **CD bag** helps you to look after and store up to twelve of your CDs.



“**Volkswagen Individual**” provision for an **iPod*** in the front centre armrest has connections for all iPods from the third generation upwards: iPod nano, iPod photo, iPod mini, iPod classic and iPod video.

■ standard
■ optional extra

*Track display is not supported. iPod is not included in the specification. Feature offered by Volkswagen Individual GmbH. It relates to the German market. Your local Volkswagen Dealer will be pleased to give you details of the differences in your specific country. Please refer to www.volkswagen-individual.de for further information.



The CD changer in the front centre armrest helps you to put on audio CDs and can take up to six discs. It can be operated via the controls of the “gamma Volkswagen Sound” radio.



Provision for a mobile phone includes a hands-free facility and radio muting, and can be combined with many mobile phones generally available.

A mobile phone cradle is not included in the specification.



The MP3 compatible “gamma Volkswagen Sound” radio has a New Beetle design, AUX-IN connection for external appliances, ten loudspeakers with an output of 4 x 20 watts and a 30-station memory. TIM (traffic information memory) keeps you up to date with traffic news.

Engines, running gear and gearbox.

With a New Beetle Cabriolet you will always reach your goal: sheer relaxation. The range of five powerful engines will help you – whether you decide on a thrifty petrol engine, the lively turbo version, or the high-torque diesel engine.



Direct diesel injection assures high pulling power for the TDI engines and, at the same time, low consumption coupled with minimal emissions. The exhaust turbocharger makes high engine output possible, even with small cubic capacity.

Consumption and CO₂ emissions

		55 kW (75 bhp)	75 kW (102 bhp)	85 kW (115 bhp)	110 kW (150 bhp)
Petrol engines					
Fuel consumption, litres/100 km*	with manual gearbox:	5-speed	5-speed	5-speed	5-speed
	urban	9.5	10.5	12.0	11.1
	extra-urban	5.8	6.0	6.9	6.5
	combined	7.1	7.7	8.8	8.2
	with automatic gearbox:	–	6-speed	6-speed	–
	urban	–	11.4	13.3	–
	extra-urban	–	6.2	6.9	–
	combined	–	8.0	9.2	–
CO₂ emissions combined, g/km*	with manual gearbox:	171	185	212	196
	with automatic gearbox:	–	190	222	–
			77 kW (105 bhp) TDI with unregulated diesel particulate filter		
Diesel engine					
Fuel consumption, litres/100 km*	with manual gearbox:	5-speed			
	urban	6.9			
	extra-urban	4.7			
	combined	5.5			
CO₂ emissions combined, g/km*	with automatic gearbox:	145			

*The fuel consumption and emission figures have been determined in accordance with the version of EU directive 80/1268/EEC currently valid. Note in accordance with the version of directive 1999/94/EC which is currently valid: these figures do not refer to a particular vehicle and do not constitute part of the offer but are purely for comparison purposes between the various types of vehicle. In addition to the fuel efficiency of a car, driving behaviour as well as other non-technical factors play a role in determining a car's fuel consumption and CO₂ emissions. CO₂ is the main greenhouse gas responsible for global warming. A guide on fuel consumption and CO₂ emissions which contains data for all new passenger car models is available free of charge at every point of sale in the European Union and, for prospective buyers in Germany, at DAT Deutsche Automobil Treuhand GmbH, Hellmuth-Hirth-Strasse 1, 73760 Ostfildern.

Equipment packages.

A number of equipment packages are available enabling you to enhance the safety, comfort and appearance of your New Beetle Cabriolet. All you have to do is decide on your personal priorities.



A **height-adjustable front passenger seat** is included in the **Highline package**. The seat can be infinitely and easily adjusted to your stature for a relaxed sitting position.



Pockets on the reverse of the front seats help to keep the interior tidy. They are provided with the **Highline package**.



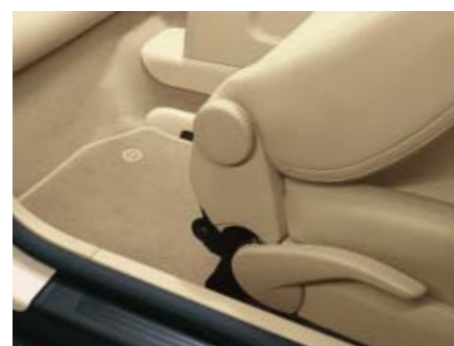
The **rain sensor** activates the windscreen wipers automatically when it starts to rain and is included in the **Technical package**. Other features in this package are an anti-theft warning system with interior monitoring, an electronic immobiliser and an automatically dimming rear view mirror.



Luxurious: the **Highline package** includes many attractive and practical extras – for example, a **leather-covered 3-spoke steering wheel** and leather trim on the gear lever knob and handbrake lever grip. An “easy entry” function, pockets on the front seats, and a height-adjustable front passenger seat also belong to this equipment package. The package is completed by steel wheels with distinctive full wheel trim and high-grade textile floor mats at front and rear.



The **gear lever knob** and **handbrake lever grip** in the **Highline package** are covered with fine leather.



The **easy entry function** in the **Highline package** makes access easier for rear passengers as the front seats slide smoothly forwards.



The **Highline package** also includes **6½ J x 16 steel wheels** with distinctive full wheel trim and 205/55 R 16 tyres.



Heated front seats are a welcome feature for your comfort on cold winter days. They belong to the **Winter package**.



The **Winter package** equips your New Beetle Cabriolet for cold days in particular. The **fog lights** improve illumination of the road in conditions of poor visibility and are therefore to be recommended as part of the safety equipment. Heated front seats and automatically heated front windscreen washer jets are also included in the Winter package.

■ standard
■ optional extra

Volkswagen Genuine Accessories.

Volkswagen Genuine Accessories stand for assured quality and optimum functionality. A high-grade vehicle like a Volkswagen fulfils your exacting requirements in respect of function and design. Volkswagen Genuine Accessories are produced in line with the same criteria as they are created in close cooperation with the development and design departments in Wolfsburg. They are therefore optimally matched to your New Beetle Cabriolet.

Volkswagen Genuine Accessories are available for the German market. You can obtain information on the differences in your specific country from your local Volkswagen Dealer. Order numbers and prices for the products shown are given in the Volkswagen accessories brochure. Please refer to www.volkswagen-zubehoer.de for additional information.



The stainless steel sports rear silencer with two 76 mm tailpipes puts the finishing touches to the overall visual impression. They match the rear apron perfectly and transform engine power into sonorous sound.



The pedal cap set highlights the front footwell with non-slip pedal caps of high-quality, brushed stainless steel. The set is available for all vehicles with manual gearbox.

The genuine Volkswagen V-Protector is a package of transparent film to protect the vehicle from stone impact, damage through corrosion, and scratch marks. It contributes towards value retention and is tailor-made for the New Beetle Cabriolet. The film can be removed without leaving residue even after a number of years. The package contains film for the front bumper, mirror caps, door handle recesses, door edges and loading edge.



The lockable cycle carrier for the tow bar can take up to two bicycles. It is fitted to the ball head of the tow bar and, depending on the nose weight of the tow bar, has a carrying capacity of up to 15 kg per wheel rail. An extension kit is available for a third bicycle.



The Bobsy G0-1 ISOFIX is a safe seat system for children weighing up to 18 kg (up to approx. 4½ years of age). The seat can be firmly secured to the vehicle body using the ISOFIX connection on the base frame, but can also easily be used in vehicles without the ISOFIX system. The child's seat is approved for groups 0/1 and can therefore be used facing away from the direction of travel for children from birth. If fitted facing the direction of travel, the seat is approved for 9 to 18 kg. The harness has a height adjustment and the seat shell can be locked at six different angles.



The Bobsy G2-3 pro is the ideal genuine Volkswagen child's seat system for children between 3 and 12 years of age (15 to 36 kg). The seat cushion has a width adjustment and together with the slumber support provides perfect padding for the seat so that the belt has optimal routing and fits closely around the child's body. A high level of comfort and the best possible protection in the event of side impact is assured for both small and older children by the special headpiece, the sides which extend far to the front, and the complete protection of the shoulder area. The seat can be adjusted for height and angle – making for very comfortable travel even on long journeys. The covers can easily be removed and washed. The seat is secured via the 3-point belt.

Paint finishes.

The intricate painting process applied by Volkswagen complies with the very highest requirements. Galvanisation provides reliable protection against corrosion as the basis for perfect paint coating. This gives the best possible protection against oxidation during the vehicle's entire lifetime – with a thickness of less than 20 millionths of a millimetre.



Salsa Red
solid paint
4Y



Platinum Grey
metallic paint
2R



Reflex Silver
metallic paint
8E



Black
solid paint
A1



Gecko Green
metallic paint
8U



Candy White
solid paint
B4



Shadow Blue
metallic paint
P6



Sunflower
solid paint
T1



Heaven Blue
metallic paint finish
R2



Harvest Moon Beige
solid paint
V1



Deep Black
pearl effect paint
2T

■ standard
■ optional extra



Laser Blue
pearl effect paint
Y3

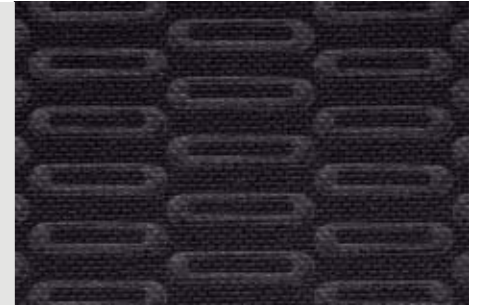
Aquarius Blue
"Luna" cloth upholstery
FR



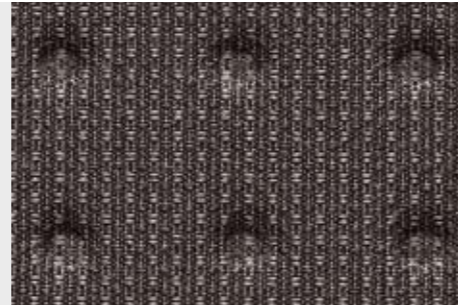
Seat upholstery.

All upholstery choices in the range have two things in common: high-grade materials and uncompromisingly good workmanship. This can be seen for example by the very closely woven fabrics which give reliable protection against wear and are therefore extremely durable.

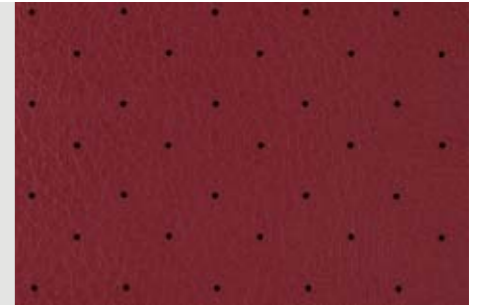
Black
"Graphic" sports seat upholstery
EU



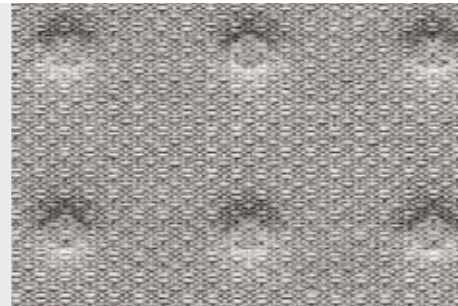
Black
"Luna" cloth upholstery
BS



Bordeaux Red, perforated
leather seat upholstery
98



Flannel Grey
"Luna" cloth upholstery
BT



Flannel Grey, perforated
leather seat upholstery
ZC



Cream
"Luna" cloth upholstery
BU



Cream, perforated
leather seat upholstery
ZD



Mellow Yellow
"Luna" cloth upholstery
FQ




Black, perforated
leather seat upholstery
ZL




■ standard
■ optional extra


Flannel Grey
sports seat upholstery in leather
73



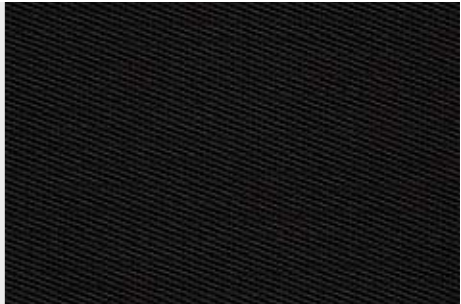
Cream
sports seat upholstery in leather
74



Black
sports seat upholstery in leather
75




Black
textile hood
SL



Titanium Grey
textile hood
SV

Only possible in conjunction with an electric-hydraulic hood.




Hoods.

A hood must be able to withstand quite a lot in the course of daily use – from weather factors to strain on the material due to permanent tensioning. Volkswagen therefore assures you of uncompromisingly good workmanship of all parts used so that you can savour driving enjoyment in your New Beetle Cabriolet to the full.

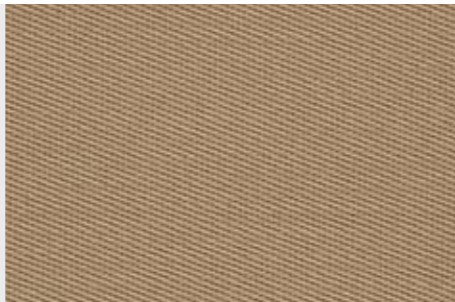
Garnet Red
textile hood
SF

Only possible in conjunction with an electric-hydraulic hood.



Dark Cream
textile hood
SH

Only possible in conjunction with an electric-hydraulic hood.



The illustrations on these pages can only be regarded as a general guide. The printing process cannot render the attractive paint finishes, seat upholstery and hoods with absolute accuracy.

- standard
- optional extra

Combinations of colours.

← Seat upholstery	← Carpeting	← Instrument panel top/bottom	← Hood cover
“Luna” cloth upholstery ●			
Black (BS)	Black	Black/Black	Black
Flannel Grey (BT)	Flannel Grey	Black/Flannel Grey	Flannel Grey
Cream (BU)	Cream	Black/Cream	Cream
Mellow Yellow (FQ)	Flannel Grey	Black/Flannel Grey	Flannel Grey
Aquarius Blue (FR)	Flannel Grey	Black/Flannel Grey	Flannel Grey
“Graphic” sports seat upholstery ○			
Black (EU)	Black	Black/Black	Black
Seat upholstery in leather ○			
Bordeaux Red, perforated (98)	Black	Black/Black	Black
Flannel Grey, perforated (ZC)	Flannel Grey	Black/Flannel Grey	Flannel Grey
Cream, perforated (ZD)	Cream	Black/Cream	Cream
Black, perforated (ZL)	Black	Black/Black	Black
Sports seat upholstery in leather ○			
Flannel Grey (73)	Flannel Grey	Black/Flannel Grey	Flannel Grey
Cream (74)	Cream	Black/Cream	Cream
Black (75)	Black	Black/Black	Black

← Salsa Red 4Y ○	← Black A1 ●	← Candy White B4 ●	← Sunflower T1 ○	← Harvest Moon Beige V1 ●	← Platinum Grey Metallic 2R ○	← Reflex Silver Metallic 8E ○	← Gecko Green Metallic 8U ○	← Shadow Blue Metallic P6 ○	← Heaven Blue Metallic R2 ○	← Deep Black Pearl Effect 2T ○	← Laser Blue Pearl Effect Y3 ○
●	●●●●	●●	●	●	●●●●	●●●	●	●	●	●●●●	●
●	●●	●	●	-	●●	●●	●	●	●	●●	●
●	●●	●	-	●●	●●	-	●	●●	-	●●	●
-	●	-	-	-	●	●	-	-	-	●	-
-	●	●	-	-	●	●	-	●	●	-	-
●	●●●●	●●	●	●	●●●●	●●●	●	●	●	●●●●	●
-	●●	●●	-	●	●●	●●	-	-	-	●●	-
●	●●	●	●	●	●●	●●	●	●	●	●●	●
●	●●●●	●●	●	●●	●●●●	●●●	●	●	●	●●●●	●
●	●●●●	●●	●	●●	●●●●	●●●	●	●	●	●●●●	●
●	●●●●	●●	●	●●	●●●●	●●●	●	●	●	●●●●	●

●●●● Hood colour in Black, Titanium Grey, Dark Cream and Garnet Red. The symbols next to the paint finishes and seat upholstery show whether they are standard (●) or an optional extra (○). No other combinations are available.

●●● Only in conjunction with an electric-hydraulic textile hood.

Some of the vehicles shown in this brochure are equipped with options at extra charge. All details of equipment and technical data are based on the features of the German market and are in accordance with the information available at the time of going to print. Your local Volkswagen Dealer will be pleased to give you details of the differences in your specific country. Subject to change without notice. TDI® is a registered trademark of Volkswagen AG and other companies in the Volkswagen Group in Germany and in other countries.

Discover Volkswagen's automotive world.



The Autostadt – a journey to the world of mobility.

Collecting your new car from the Autostadt in Wolfsburg, the communications platform of the Volkswagen Group, will be a memorable experience for you, for those accompanying you – or for the whole family. Collect your new Volkswagen in person and visit the many attractions located in 25 hectares of lagoon-like scenery.

In the course of your journey through the world of mobility you will get to know the various Volkswagen Group brands. You discover how an engine works, look at automotive milestones in the ZeitHaus museum, and watch in amazement as you see how easily the youngsters get their children's driving licence. On factory tours during production times you can experience first hand the individual steps involved in building a car. Try out the off-road course or spoil yourself with a little luxury at The Ritz-Carlton 5-star hotel in Wolfsburg. Incidentally, the Michelin gourmet guide recently awarded a third star to Sven Elverfeld, Chef de Cuisine at AQUA. When the moment arrives that you can collect your vehicle, your personal adviser accompanies you during the handover. You are given your keys and all details are explained to you. At the end of your brief holiday, you can then drive home in your new Volkswagen.

You can obtain details via the Internet website www.autostadt.de or phone our Customer Care Centre on **0800 – 288 6782 38**. They will be pleased to organise everything so that all formalities run smoothly – from your order to individual travel arrangements. You can of course also receive all relevant information from your Volkswagen Dealer.

Volkswagen driving experience. How should I react on slippery road surfaces? How do I avoid an obstacle that suddenly appears on the road? How do I control my vehicle in unforeseen situations? You will find the answers to these questions and a great deal more besides during “Volkswagen driving experience” driving and safety training. Professional instructors give you tips and advice to help you calmly master complex situations. The training offered ranges from intensive training covering the basics of safe driving; eco training, where you learn how even a slight change in your mode of driving can effectively save fuel, and a more sporty kind of driver training. We shall be glad to send you details – please contact us by phone on our free hotline **0800 – 893 83 68** or via the Internet: www.volkswagen-driving-experience.de.

Service guaranteed. Wherever you are, you can take advantage of the comprehensive Volkswagen service offered at each of our approx. 2,500 Dealers in Germany. Please visit us or contact us by phone free of charge under **0800 – VOLKSWAGEN (0800 – 86 55 79 24 36)**.

Quality guaranteed. In addition to the statutory warranty, you receive a 2-year Volkswagen guarantee* for all new Volkswagen cars, a 3-year guarantee for paint on the bodywork* and a 12-year guarantee against rusting through*.

Mobility guaranteed. Breakdown service, replacement car or overnight accommodation in a hotel. If you have your Volkswagen serviced regularly as recommended, you can enjoy the advantages of the LongLife mobility guarantee. The free emergency hotline can be reached under **0800 – 897 37 84 23**.

Volkswagen Club. Experience the Volkswagen brand first hand. You can, for instance, take a look behind the scenes and take part in exclusive events. Discover the latest Volkswagen models before their official launch, take advantage of the special conditions offered by our associates, and collect loyalty points.

Detailed information is available from your Volkswagen Dealer; on the free hotline **08000 – VW CLUB (08000 – 89 25 82)**; and via the Internet www.vw-club.de.

Volkswagen TeleCom. With a Volkswagen TeleCom mobile phone card you can be reached in Germany and in many other countries in and outside Europe. Please refer to www.volkswagen-telecom.de for more information.

Volkswagen Bank. The services offered by Volkswagen Bank are tailor-made for you and your new Volkswagen. Our special packages combine up-to-date forms of financing or leasing with comprehensive insurance protection and therefore offer you peace of mind. Further information can be obtained from www.volkswagenbank.de and from your Volkswagen Dealer.

*All details of the Volkswagen guarantee and of the Volkswagen paint and bodywork guarantee apply solely to vehicles of the Volkswagen brand in accordance with the current range of vehicles offered for the Federal Republic of Germany, and which are issued with a service booklet from Volkswagen AG for the German market. The services offered on these pages apply only to the German market. Your local Volkswagen Dealer will be pleased to give you details of the differences in your specific country.



The New Beetle Cabriolet

915.1196.06.18 · Printed in Germany

Subject to change without notice

Issue: June 2009

Internet: www.volkswagen.de

■

■

Your Volkswagen Dealer

■