



Das Auto.

THE PHAETON

EQUIPMENT



THERE IS NOWHERE BETTER TO RELAX
THAN WHERE YOU FEEL AT HOME.

Put the ultimate finishing touch to your Phaeton by customising your choice of fittings, materials and colours to configure the Phaeton that most closely corresponds with your idea of a luxury saloon. The following pages give you an overview of the options available. We will be glad to welcome you to “Die Gläserne Manufaktur” in Dresden where we will take all the time needed to help you create the Phaeton of your dreams.

The 5-seater Phaeton: a basis to build on for the Phaeton, yet perfection in itself for the car. The standard 4-zone Climatronic lets you make individual settings for each of the four outer seats. This air conditioner has an indirect ventilation system which functions virtually draught-free. The elegant wood trim covering the air vents only opens when more powerful ventilation is required, demonstrating one of those small yet refined details that make the Phaeton so special. The seats have as standard cashmere-like upholstery with exceptionally high-grade visual and haptic qualities. There are, of course, also numerous leather options to choose from. The 5-seater Phaeton can comfortably and safely accommodate up to three rear passengers if required, but even if the centre rear seat remains unoccupied, it still serves a purpose. A folding centre armrest provides plenty of stowage space inside as well as a retractable cup holder with push button release. Ideally, you will enjoy your refreshments while sitting on the optional "Premium" rear seating. In this case, the head restraints and lumbar supports of the two outer seats have electric adjustment; and the front seats and outer rear seats are equipped with heating and ventilation as well as a massage function.



■ standard (V6)

W12 standard on W12

V8 standard on V8

V6 LR standard on V6/V6 TDI/long wheelbase

■ optional extra

W12 LR standard on W12/long wheelbase

V8 LR standard on V8/long wheelbase



You may very well be familiar with the comfort offered by the 4-seater Phaeton – from your dreams. Our illustration can only give an idea of the attractive link formed by the continuous centre console between the front and the rear of the vehicle, and the pleasant feeling of space. The console can, for example, have a “Burr Walnut” finish, and the seats are upholstered in “Vienna Classic Style” leather as standard. All seats are equipped with heating, active seat air conditioning and active lordosis support, including a massage function. You could also say that the longer the journey is, the more relaxed you will arrive at your destination. The front seats are adjustable to 18 different settings for an optimum fit. Once you have found the ideal position, the memory function will keep an exact record of your seating preferences. The single rear seats have a 10-way electric adjustment for the seat surface, backrest angle, and the head restraints. Rear passengers in the 4-seater Phaeton have a separate control to operate the virtually draught-free 4-zone Climatronic system and, as an option, a control to move the front passenger seat forward if they require more legroom.



■ standard (V6)

W12 standard on W12

V8 standard on V8

V6 LR standard on V6/V6 TDI/long wheelbase

■ optional extra

W12 LR standard on W12/long wheelbase

V8 LR standard on V8/long wheelbase



The Phaeton 4-seater with long wheelbase makes your entry into the world of supreme automotive luxury even more comfortable by increasing the rear legroom by some 12 cm. As the front passenger seat can be adjusted from the rear seat, rear passengers can stretch their legs out in real comfort. Manual sunblinds on the side windows as well as an electric blind for the rear window let you enjoy a moment of peace and quiet.



■ standard (V6)

W12 standard on W12

V8 standard on V8

V6 LR standard on V6/V6 TDI/long wheelbase

■ optional extra

W12 LR standard on W12/long wheelbase

V8 LR standard on V8/long wheelbase



Exterior.

A design that is here to stay in a world of designs that come and go. The classic silhouette of large saloons is enduring and, although not invented by the Phaeton, it is cultivated by this model like no other automobile. In other words: take a look at this vehicle many years from now. It will have lost none of its elegance and expressiveness. Not only is the design timeless, the virtually imperceptible joint and gap dimensions reflect exceptional manufacturing quality.



The face of the Phaeton speaks volumes: take a look and you will recognise the craftsmanship and passion with which it was made. The design of the headlights and radiator grille blends to create a striking impression of breadth. The bi-xenon headlights have an eye-catching black background, and a combination of matte and shiny chrome gives the radiator grille a particularly high-quality appearance.

standard (V6)

W12 standard on W12

V8 standard on V8

optional extra

W12 LR standard on W12/long wheelbase

V8 LR standard on V8/long wheelbase



The **electric folding door mirrors** feature LED turn signals, integrated surround lighting and can be heated to ensure optimal visibility at all times.

Standard on 4-seater.

W12 **W12 LR**

V6 LR standard on V6/V6 TDI/long wheelbase



Sliding/tilting solar roof: the integral solar cells supply the ventilation fan with current, even when the ignition is switched off. This significantly lowers the temperature inside the vehicle on hot days.



The electric **sliding/tilting glass roof** has an integral wind deflector. It is adjusted automatically – depending on driving speed and how far the roof is opened – to reduce wind noise and draughts.

There is then no pocket for spectacles in the roof console.

W12 LR **V8 LR** **V6 LR**

Heated front windscreen (not illustrated). A heating film in the glass is activated by a button on the centre console. This helps to demist/defrost the windscreen without restricting your view.



Insulating glass ensures a more pleasant interior climate. It helps guard against excessive heat build-up in the interior when outside temperatures are high, thereby assuring the well-being of the occupants. Insulating glass also reduces the need for air conditioning and therefore lowers fuel consumption, since less energy is required to cool the interior to the desired temperature.

W12 **W12 LR** **V8** **V8 LR**



Tradition meets innovation – at the rear of the Phaeton. Framed by clear, classic surfaces and powerful proportions, the newly designed **tail lights with LED technology** radiate quality and modernity. The prominently positioned LEDs improve visibility and give the Phaeton an unmistakable look during the day and in the dark.

Alloy wheels.

The choice of wheel rims is the crowning feature of every Phaeton. Ranging from dynamic and sporty to classic and elegant, the selection of wheels offered leaves nothing to be desired. At “Die Gläserne Manufaktur” we will, of course, be pleased to show you the actual wheels available and give extensive, personal advice to help you make your choice.



Four “**Impression**” alloy wheels, 7½ J x 17, 235/55 R 17 tyres, painted Sterling Silver.

Not for W12/W12 with long wheelbase.

■ standard (V6)

W12 standard on W12

V8 standard on V8

■ optional extra

W12 LR standard on W12/long wheelbase

V8 LR standard on V8/long wheelbase



Four “**Impression**” alloy wheels, 7½ J x 17, 235/55 R 17 H winter tyres, in addition to the summer tyres selected.

Not for W12/W12 with long wheelbase.

V6 LR standard on V6/V6 TDI/long wheelbase



Four **“Dynamic”** alloy wheels, 7½ J x 18, 235/50 R 18 tyres. Painted Sterling Silver.

Also available as additional winter wheels with size 235/50 R 18 H winter tyres.



Four **“Innovation”** alloy wheels, 8½ J x 18, 255/45 R 18 tyres. Painted Sterling Silver.

W12 **W12 LR**



Four **“Performance”** alloy wheels, 8½ J x 18, 255/45 R 18 tyres. Bright finish, spaces between spokes in Anthracite.



Four **“Spirit”** alloy wheels, 8½ J x 18, 255/45 R 18 tyres.



Four **“Experience”** alloy wheels, 8½ J x 18, 255/45 R 18 tyres. Painted Sterling Silver.

Our vehicles are equipped with summer tyres as standard. As of 1st May 2006 you are required by law in the Federal Republic of Germany to adapt the equipment of your vehicle, in particular the tyres, in wintry weather conditions. Your local Volkswagen Dealer will be pleased to advise you.

Interior.

Modern technologies, classic wood trim and dedication to detail in the design of the Phaeton are all perfectly harmonised in the interior. The effect is a serene, stylish, inviting atmosphere – not much else in the world of luxury can offer all this.



Behind the wheel of a Phaeton, the concept of supreme comfort suddenly becomes a matter of course with intuitive operation of the myriad of functions and systems in the vehicle – via the multi-function steering wheel, for example, or the controls on the clearly structured centre console. Easy to read circular instruments with a classic design are arranged behind the steering wheel. These are complemented by a clearly structured multi-colour, multifunction display which provides the driver with navigation advice and information on important parameters such as average speed, tyre pressures, or current and average fuel consumption. The Infotainment unit in the centre console features an 8 inch touch screen which allows you to select music tracks – or play films when the vehicle is stationary. All information can be registered at a glance. Every switch and every menu item is there where you intuitively expect it to be. The clear layout of the cockpit also has the effect of leaving plenty of space for generous wood surfaces, shiny chrome elements, fine leather trim and, last but not least, probably the most well-loved feature in the Phaeton's cockpit – the analogue clock of timeless beauty.

standard (V6)

W12 standard on W12

V8 standard on V8

V6 LR standard on V6/V6 TDI/long wheelbase

optional extra

W12 LR standard on W12/long wheelbase

V8 LR standard on V8/long wheelbase



12-way front seats. The seat height, seat and backrest angle, lumbar support, and the distance between the seat and the instrument panel, can be conveniently adjusted via an electric control unit on the outer side of the seats.

Standard on 5-seater with long wheelbase. **V8 LR** **V6 LR**



The **18-way front seats** are equipped with an electronic massage function and active lordosis support. The lumbar back muscles can therefore if you wish be gently massaged. A separate fan with adjustable ventilation intensity directs climatized ambient air to the seat. Sitting comfort is perfected by integrated seat heating and additional adjustments for the top of the backrest and seat depth, and electrically adjustable head restraints.

Standard on 4-seater. Only in conjunction with leather trim.

W12 **W12 LR**

Depending on the upholstery colour selected, the **headlining** is available as an option in **Anthracite** (not illustrated) instead of Crystal Grey.

Not with Alcantara package.

In conjunction with 18-way front seats, **“Sensitive Classic Style” full leather trim** (not illustrated) also includes leather trim on the upper and lower sections of the instrument panel, the front seat backs and, on the doors: the door panel trim, armrests, window cappings, door pulls and storage pockets.



Extended wood package: whether you opt for “Eucalyptus”, “Poplar Grain”, “Vavona” or “Burr Walnut” – this package assures a very special ambience. It includes wood inserts for the grab handles and a second wooden trim strip on the door armrests.



You can feel the high quality and elegance of the Phaeton on the **leather-covered multifunction steering wheel with wooden rim**. The integral buttons let you operate many functions without having to take your hands from the wheel.

W12 **W12 LR**



The **heated, leather-covered multifunction steering wheel** warms your hands on cold days and has integrated buttons to operate the radio, telephone, multifunction display, voice control and cruise control.

Only in conjunction with heated front seats or leather trim and the Memory package.

standard (V6)

W12 standard on W12

V8 standard on V8

V6 LR standard on V6/V6 TDI/long wheelbase

optional extra

W12 LR standard on W12/long wheelbase

V8 LR standard on V8/long wheelbase

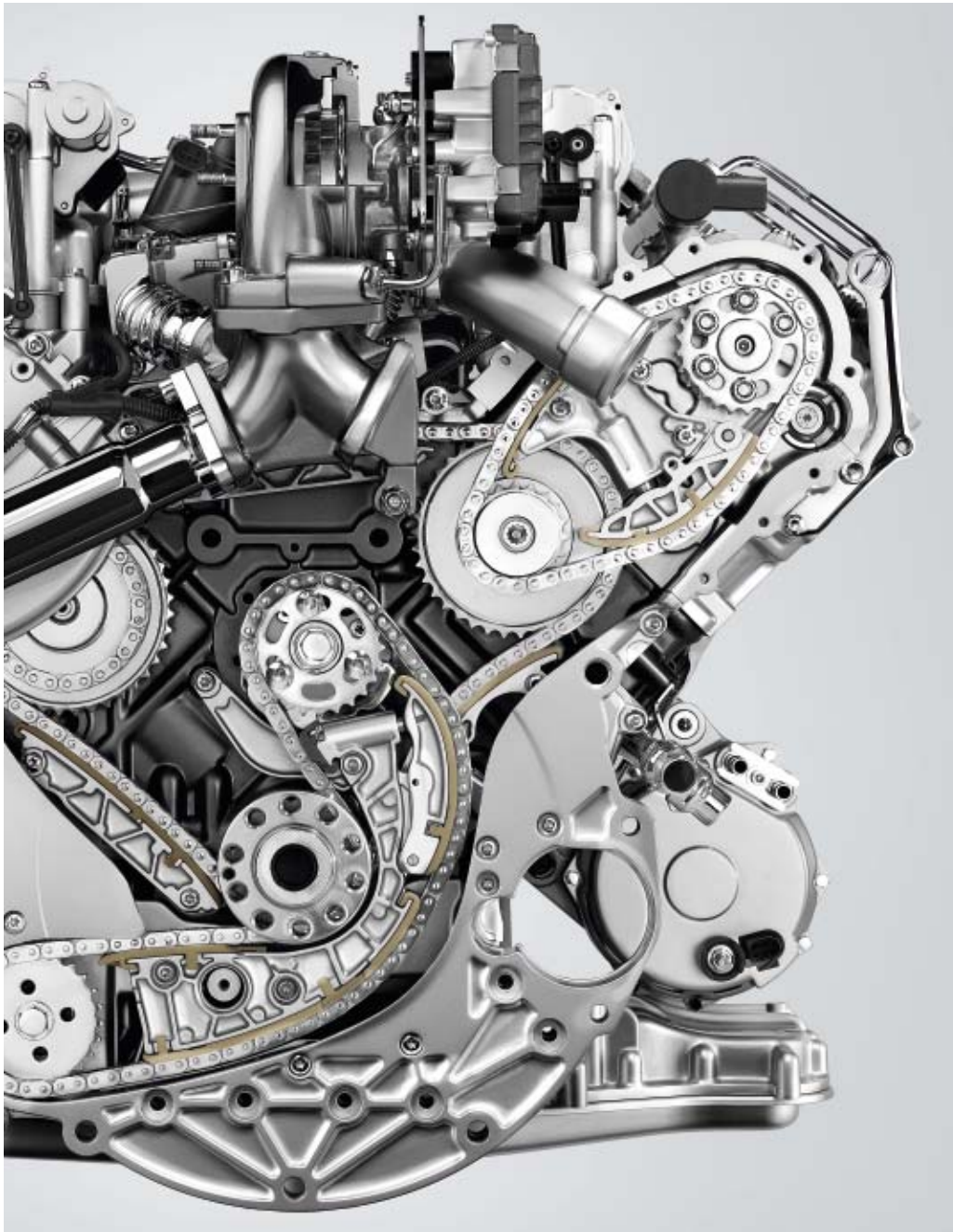
Engines, running gear and transmission.

There is one very special moment during the production process of a Phaeton in “Die Gläserne Manufaktur”: the “marriage” of the body and chassis. The last moment allowing a clear view of the drive unit and of the chassis is immediately before they are joined – and you will continue to watch in wonder for a long time to come when you see the effect brought about by these technologies on the road.

Consumption and CO₂ emissions.

Engines		206 kW (280 bhp) V6 4MOTION ²⁾	246 kW (335 bhp) V8 4MOTION ²⁾	331 kW (450 bhp) W12 4MOTION ²⁾	176 kW (240 bhp) V6 TDI ³⁾ 4MOTION ²⁾
fuel consumption, litres/100 km¹⁾	with automatic gearbox:	6-speed	6-speed	5-speed	6-speed
	urban	16.5	18.2	21.4	11.6
	extra-urban	8.4	9.2	10.5	6.7
	combined	11.4	12.5	14.5	8.5
CO₂ emission combined, g/km¹⁾	with automatic gearbox:	265	290	348	224

1) The fuel consumption and emission figures have been determined in accordance with the measuring method stipulated (the version of regulation [EC] 715/2007 which is currently valid). Note in accordance with the version of directive 1999/94/EC which is currently valid: these figures do not refer to a particular vehicle and do not constitute part of the offer but are purely for comparison purposes between the various types of vehicle. In addition to the fuel efficiency of a car, driving behaviour as well as other non-technical factors play a role in determining a car's fuel consumption and CO₂ emissions. CO₂ is the main greenhouse gas responsible for global warming. A guide on fuel consumption and CO₂ emissions which contains data for all new passenger car models is available free of charge at every point of sale in the European Union and, for prospective buyers in Germany, at DAT Deutsche Automobil Treuhand GmbH, Hellmuth-Hirth-Strasse 1, 73760 Ostfildern. 2) Also applies to the model with long wheelbase. 3) This vehicle is fitted with a regulated diesel particulate filter. In the Federal Republic of Germany it is taxed up to 31.03.2011 at an annual rate of 1.20 € less per 100 cm³ cubic capacity or part thereof than vehicles without a diesel particulate filter. The diesel particulate filter is a continuously self-regenerating system. In rare, exceptional cases, individual driving behaviour is to be temporarily adapted to this. Information on this is available at your Volkswagen Dealer and via our telephone 0800 – VOLKSWAGEN (0800 – 86 55 79 24 36) which is free of charge in the Federal Republic of Germany.



Thanks to modern direct petrol injection technology, the **Phaeton V6¹⁾** combines fuel consumption and high output at an efficient level. It consumes an average of only 11.4 litres of fuel per 100 kilometres and develops a powerful 206 kW (280 bhp) from a cubic capacity of 3.6 litres at torque of 370 Newton metres. This allows the Phaeton to accelerate from 0 to 100 kph in 8.6 seconds²⁾.

The irresistible sonorous sound and supreme confidence of an 8-cylinder engine can be experienced in the **Phaeton V8¹⁾**. Output of 246 kW (335 bhp) from a cubic capacity of 4.2 litres and torque of 430 Newton metres at 3,500 rpm accelerate the Phaeton V8¹⁾ from 0 – 100 kph in only 6.9 seconds – and straight to the heart of every automobile enthusiast.

The **Phaeton W12¹⁾** is in a class of its own with the most compact 12-cylinder unit in the world. It develops 331 kW (450 bhp) and torque of 560 Newton metres from a capacity of 6 litres, accelerating the saloon from 0 to 100 kph in only 6.1 seconds. Acceleration is governed electronically at 250 kph but this should not curb your enjoyment of the Phaeton W12¹⁾ in any way.

The **Phaeton V6 TDI¹⁾**. This extremely smooth-running diesel unit has an output of 176 kW (240 bhp) and makes an impressive 500 Newton metres of torque available. The tremendous pulling power of this engine right from low engine speeds lowers both fuel consumption and noise levels.

1) Please refer to Page 17 for information on fuel consumption and CO₂ emissions. 2) Figure applies to 5-seater.



Only if there is perfectly matched power transmission can the virtues of an engine be converted into ride comfort and driving enjoyment. One example of this in the Phaeton is standard air suspension with electronic control which adapts precisely to every situation on the road. The running gear is lowered at high speeds, and raised when driving over uneven surfaces. A comfort setting with soft damping assures comfortable travel; when cornering fast, damping is automatically set to be firmer in order to increase stability. The suspension is also self-levelling. It recognises and compensates for weight differences on the vehicle. Every Phaeton has 4MOTION all-wheel drive as standard for noticeably more traction and forward motion, even in poor weather conditions. A Torsen differential with sensitive reaction ensures that the distribution of power to each wheel is adapted to road conditions within a fraction of a second, thereby increasing driving safety and ultimately contributing to the exceptional level of ride comfort in the Phaeton.

standard (V6)

W12 standard on W12

V8 standard on V8

V6 LR standard on V6/V6 TDI/long wheelbase

optional extra

W12 LR standard on W12/long wheelbase

V8 LR standard on V8/long wheelbase



A **Tiptronic automatic gearbox** is standard in every Phaeton. It takes account of your individual driving style and has a dynamic shift programme that adapts the shift points exactly to your driving style at any given time.

■ standard (V6)

W12 standard on W12

V8 standard on V8

■ optional extra

W12 LR standard on W12/long wheelbase

V8 LR standard on V8/long wheelbase



Thanks to **electronically controlled air suspension**, the Phaeton glides smoothly and serenely along the road. Rolling and pitching – for example when cornering, accelerating or braking hard – are reduced to a barely discernible minimum. If required, the running gear can be raised, and at high speeds it is lowered automatically by up to 15 mm to reduce air drag.

V6 LR standard on V6/V6 TDI/long wheelbase

Safety.

What would all the comfort of the Phaeton be worth if you could not be confident in the safety offered? The extensive safety features in the Phaeton will give you that confidence. They include technologies that help to prevent accidents as well as numerous passive safety systems to provide the best possible occupant protection if the worst should come to the worst.



The **bi-xenon headlights with adaptive cornering lights and LED daytime driving lights** have built-in motors that move the headlights in the direction of travel thus improving illumination of the road and the side of the road, particularly on bends. In addition, when turning off, the static LED cornering light is activated for even better close-range lighting. LED daytime driving lights are switched on automatically when the ignition is operated. The turn signals also feature LED technology.



A multifunction camera is integrated in the front windscreen. This registers signals and images for the traffic sign recognition function and dynamic high-beam control. The standard rain sensor is also part of this module.



The **fog lights** feature LED technology – and therefore shine more brightly than conventional light bulbs. They have a striking design and provide distinctly better illumination of the road ahead.

standard (V6)

optional extra

W12 standard on W12

W12 LR standard on W12/long wheelbase

V8 standard on V8

V8 LR standard on V8/long wheelbase



“Dynamic Light Assist” **dynamic high-beam assistant** prevents other road users being dazzled when high beams are activated and therefore helps to ensure permanent optimum illumination of the road. A camera integrated in the windscreen recognises oncoming traffic and vehicles driving ahead and specifically fades out this area. “Dynamic Light Assist” dynamic high-beam assistant is activated automatically on unlit roads and as of speeds of approx. 60 kph.



During parking and manoeuvring **park distance control** indicates how much space is left between the Phaeton and other vehicles or obstacles at front and rear. The driver is given an acoustic and visual warning of the remaining distance.

V6 LR standard on V6/V6 TDI/long wheelbase



In the event of a rear collision, **the active head restraints** automatically move forwards to cushion the head at an earlier stage. This reduces the risk of whiplash injuries.



The occupants of a Phaeton are protected by no less than eight airbags: two front airbags, four side airbags and two curtain airbags. All are controlled by innovative early crash sensors which are located at various points on the body. In the event of an accident they supply accurate information on the gravity and angle of the accident. Each airbag can then react precisely to a thousandth of a second, and independently of the others.

To avoid dangerous situations right from the outset, the Phaeton has a special **pre-crash concept** (not illustrated). Many electronic helpers make the vision of a vehicle featuring anticipatory systems with foresight reality. These include the tyre pressure monitoring system available as an option as well as proven technologies such as ABS, TCS and the electronic stabilisation programme which are standard in a Phaeton, as is a rain/light sensor. The latter includes automatic driving light control at twilight and high speeds. Other road users also benefit from the comprehensive safety concept of the Phaeton. This is proved by the standard automatic hazard warning light function which automatically warns following vehicles if full braking is applied.

Comfort.

From small details adding to your comfort and convenience to cutting-edge technologies – there is so much that can make driving a more enjoyable experience. The Phaeton represents one of those rare places where everything comes together perfectly. Comfort in the Phaeton does more than just ensure your well-being. A comprehensive range of driver assistance systems genuinely eases the burden on the driver – and therefore makes every journey much safer.



The “coming home” and “leaving home” functions mean that the Phaeton will not only bring you home safely but will take you to your doorstep. The front headlights, tail lights and the spotlights integrated in the door mirrors all illuminate the surrounding area for up to four minutes after you have locked or unlocked your vehicle, providing added safety and comfort when getting in and out of your vehicle.



The luggage compartment lid with power latching has an integrated electric motor enabling it to be opened conveniently from the comfort of the cockpit – and closed again by pressing a button located on the lid.

W12 **W12 LR**

standard (V6)

W12 standard on W12

V8 standard on V8

V6 LR standard on V6/V6 TDI/long wheelbase

optional extra

W12 LR standard on W12/long wheelbase

V8 LR standard on V8/long wheelbase



“Premium” mobile phone preparation with Bluetooth wireless technology (remote SIM Access Profile/rSAP, hands-free profile) enables fast UMTS data transmission per phone module. It can as an option be supplied with a Bluetooth receiver which is as versatile as a mobile phone and as user-friendly as a conventional phone. It has convenient operation via voice recognition or the Infotainment system.



Steering column paddles facilitate ergonomic operation of Tiptronic. Manual, Formula 1 style gear changing makes for a more dynamic driving experience.

The tyre pressure monitoring system (not illustrated) gives indication on the multi-function display should there be any loss of pressure on the tyres. Correct tyre pressures lengthen the service life of tyres and fuel consumption is lower.



The electric sunblind on the rear window is available on its own or in a package with manual blinds on the rear side windows. The special structure of the blinds transforms the glare of the sun into soft light – and still gives a good view.

W12 LR V8 LR V6 LR



The integral blinds on the rear side windows have manual operation and protect rear passengers from direct sunlight.

W12 LR V8 LR V6 LR



The vanity mirrors for rear passengers are integrated in the headlining.

W12 LR V8 LR V6 LR



There is not only a great difference in temperature between hot and cold but also between each individual's perception of temperature. The "Climatronic" air conditioner with 4-zone temperature control therefore enables each occupant to select their preferred climate. It has virtually draught-free operation and registers all relevant factors – such as the position and intensity of the sun, and outside temperature. It supplies either more or less cool air accordingly. A sensor continuously measures humidity inside the vehicle and corrects it automatically if necessary.

standard (V6)

W12 standard on W12

V8 standard on V8

optional extra

W12 LR standard on W12/long wheelbase

V8 LR standard on V8/long wheelbase



The standard 4-zone Climatronic can as an option have an additional rear control and can then be operated from all five seats.

Only for 5-seater.

W12 LR **V8 LR** **V6 LR**



The 4-zone Climatronic was developed specifically for the Phaeton. It has practically draught-free operation, individual air conditioning adjustments for each seat, and a control element for convenient operation by rear passengers.

Only for 4-seater.



The control unit for the 10-way rear seats adjusts the seat surface, the backrest and the head restraint entirely intuitively. An additional control, available as an option, enables the front passenger seat to be adjusted by rear passengers.

Only for 4-seater.

V6 LR standard on V6/V6 TDI/long wheelbase



As of a speed of 30 kph, cruise control maintains the speed at the set level for additional comfort and convenience on long journeys in particular.



The air vents of the 4-zone Climatronic are opened and closed automatically in automatic mode.



The “keyless access” locking and starting system: with the optional “keyless access” function, the Phaeton is started via the **starter button** without putting the key in the ignition lock.



The **Memory package** for the 12-way seats records individual seat settings, also the positions of the steering column, rear view mirror, door mirrors and seat belts – and adjusts them automatically when the vehicle is unlocked by remote control.

Standard on 4-seater.

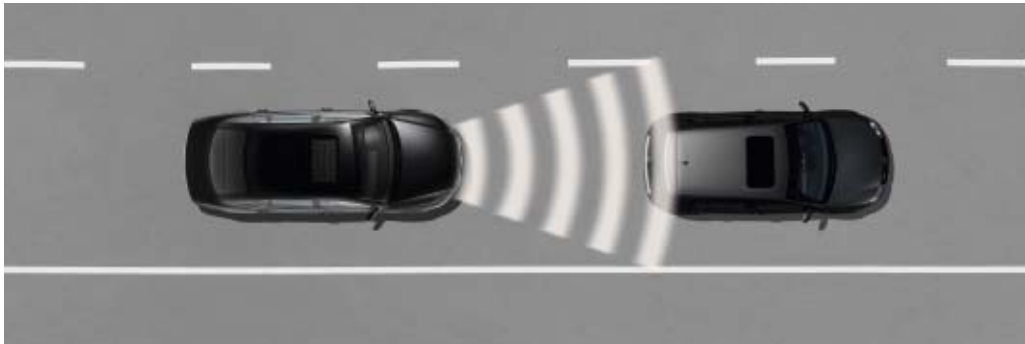
W12 **W12 LR**



The “keyless access” locking and starting system: when the door handle is touched, the electronics of the vehicle communicate with the key. The doors are unlocked and the Memory package activated even if the key is in your pocket.



Central locking with radio remote control locks and unlocks the Phaeton from a distance at the touch of a button. The windows and sliding roof can be operated by inserting the folding key into the lock on the driver's door.



Automatic distance control ACC and “Front Assist” area monitoring system adapt the speed selected by the driver to that of the vehicle ahead and maintains a constant distance. If “Front Assist” registers that another vehicle is approached too closely, it warns the driver in two stages: first a visual and acoustic warning, and then a brief application of the brakes.



With the **“Rear Assist” reversing camera** you have an optimal view of the area behind your Phaeton. The camera images are shown on the display of the Infotainment system together with lines indicating the path of travel when reversing.

The **anti-theft warning system** (not illustrated) includes an electronic immobiliser, a back-up horn as an acoustic warning system, and a tow-away warning. Special interior monitoring provides additional security.

W12 **W12 LR**



The **“Side Assist” lane change assist system** uses rear radar sensors to monitor traffic behind the vehicle when the driver is preparing to change lanes. Should the system’s radar identify a vehicle in the blind spot, or if vehicles are approaching fast from behind, a warning signal is displayed in the door mirror. When switched on, the system is activated automatically as of a speed of 30 kph.



The **auxiliary heater and ventilation with remote control** can be activated from a distance of up to 600 metres. This results in warm seats, de-iced windows and therefore more comfort and safety.



The **built-in garage door opener** is integrated in a console on the headlining and can be set to the control frequency of your electric garage door and two other systems.

Please obtain information on the applications of the garage door opener from your local Volkswagen Dealer prior to ordering this feature.

V6 LR standard on V6/V6 TDI/long wheelbase

standard (V6)

W12 standard on W12

V8 standard on V8

optional extra

W12 LR standard on W12/long wheelbase

V8 LR standard on V8/long wheelbase

Multimedia.

Accelerating by gently stepping on the accelerator pedal. The serenity with which the world outside passes by. The look of wood and the feeling of soft leather. The Phaeton is in itself very entertaining. High-end entertainment features complete the exceptional driving experience. These include preparation for the use of online services*, television reception and a sensational sound system.



Compelling technology: the “RNS 810” radio/navigation system, including preparation for the use of online services*, sets standards in in-car infotainment. In conjunction with “Premium” mobile phone preparation it will play your music files from any external media player via the Bluetooth connection. The system gives you online access to Google™ satellite images for the display of navigation maps. To ensure that you have all the very latest information at your fingertips, you can even retrieve online data on special destinations using Google Local Search. Addresses and contact data for banks, petrol stations or restaurants can be displayed – and the system can then either guide you to a selected location or set up a phone connection for you.

Google, Google Local Search and the Google logo are registered marks of Google Inc.

*Use of the optional online services (internet-based searches and the retrieval of satellite images) requires “Premium” mobile phone preparation and a connected rSAP-enabled mobile phone as set out on the compatibility list issued by Volkswagen as well as a corresponding mobile phone contract that includes an option for data transmission. Use of the online services incurs additional costs (fees and rates as governed by the relevant individual mobile phone contract; Volkswagen recommends entering a data flat rate agreement). For detailed information, please contact your Volkswagen Dealer or your internet or phone provider. These online services are only available in selected countries. Again, please contact your Volkswagen Dealer for information about present or future availability in your area. We expressly draw your attention to the fact that Volkswagen cannot assure the long-term availability of the online services as these are made available by third parties. Depending on the network, there may be limitations in respect of telephone services and data communications in some areas when using online services and satellite images.



TV reception makes it possible to receive analogue and digital television (DVB-T) with excellent picture and tone quality when the vehicle is stationary. Should there be no digital signal, or if the signal is too weak, the tuner switches over automatically to analogue reception.

standard (V6)

W12 standard on W12

V8 standard on V8

optional extra

W12 LR standard on W12/long wheelbase

V8 LR standard on V8/long wheelbase



Thanks to the MEDIA-IN multimedia socket (not illustrated) audio files from data storage units and MP3 players with USB certification can be played via a USB interface. An Apple iPod of the fourth generation upwards or an iPhone can also be connected using an adapter cable.



The “RNS 810” radio/navigation system has a **traffic sign recognition** feature: speed limits and no-overtaking signs* are recognised by a camera and shown on the multifunction display. The system compares this information automatically with the navigation data and ensures that only restrictions relevant for you are displayed. Additional information is also registered – such as speed limits applying to wet and slippery roads or only to vehicles towing trailers.

*Will be introduced at a later date. Your local Volkswagen Dealer will be pleased to give you details.

V6 LR standard on V6/V6 TDI/long wheelbase



You have the **damping adjustment** at your fingertips. There is the choice of a comfort or sport setting to suit your driving style – with infinite adjustment between the two.



The **audio system** transforms the interior of the Phaeton into a veritable concert hall. The unparalleled sound experience that you can enjoy wherever you are sitting is the result of exceptionally balanced audio technology. The two audio systems available have been specifically matched to the interior geometry of the Phaeton. The 8/10 audio system comes with an 8-channel amplifier that supplies 190 watts to ten loudspeakers. A standard CD changer is fitted in the glove compartment. The “DYNAUDIO Temptation” sound system displays great attention to detail. It has a 12-channel digital amplifier that feeds up to 1,000 watts to twelve high-performance loudspeakers. The system has fine tuning via the Infotainment system for maximum listening pleasure.



The tranquillity inside the Phaeton and the “DYNAUDIO Temptation” sound system combine to create an acoustic dream come true. The system features ultra-modern, specially synchronised speaker technology. The clarity and detail of precisely defined basses, natural mid-range tones and crystal-clear high tones are definitely a cut above the rest. Add the 1,000 watt high-performance digital amplifier, and the result is a true masterpiece in the art of sound.



You can use **voice control** to retrieve and dial the contact numbers contained in your mobile phone. You have the option of allocating multiple numbers to a single individual using key words such as “home” or “mobile”. In addition, all the functions of your radio/navigation system can be operated by voice control.



The monitor for the Infotainment system also serves as a **phone book**. You can retrieve as many as 1,000 entries from your mobile phone.

Volkswagen Exclusive equipment.

The desire for the out of the ordinary is at the same time a desire for individuality. This can be realised with the help of Volkswagen Exclusive equipment: select materials, exclusive designs for interiors and wheel rims, or the convenience of a refrigerator integrated at the rear are all extra special features – and turn a masterpiece into your one of a kind Phaeton.



It is the way colours are combined that shows them to best advantage. The “Sun Beige/Anthracite” colour option for “Sensitive Classic Style” leather upholstery features “Sun Beige” on the centre seat panels, door inserts and piping; and “Anthracite” on the seat sides, front seat backs and centre armrests. The illustration shows this combination together with optional wood décor in black piano lacquer.

standard (V6)

W12 standard on W12

V8 standard on V8

V6 LR standard on V6/V6 TDI/long wheelbase

optional extra

W12 LR standard on W12/long wheelbase

V8 LR standard on V8/long wheelbase



If full leather trim is selected, the upper and lower section of the instrument panel, the door panel trim, door armrests, window cappings and door handles are covered with “Sensitive Classic Style” leather – also the storage pockets on the doors. “Cameo/ Anthracite” is one example of the colours available and it can be combined with the perfectly matched optional decorative “Black Poplar Grain” wood inserts.

Feature offered by Volkswagen R GmbH. Please refer to www.volkswagen-r.de for further information.



The **compressor fridge** incorporated in the rear seat has a capacity of 9 litres to cool your drinks and snacks to the temperature set by you.

Only for 5-seater.

standard (V6)

W12 standard on W12

V8 standard on V8

optional extra

W12 LR standard on W12/long wheelbase

V8 LR standard on V8/long wheelbase



A fine fabric covering: the **Alcantara package** comprises the headlining, roof pillar trim and sun visors.

Only in conjunction with park distance control or reversing camera.



Stowage net in front passenger footwell: small items can be safely stowed here.

V6 LR standard on V6/V6 TDI/long wheelbase



Four “Aristoteles” alloy wheels, 8½ J x 18, 255/45 R 18 tyres. Surface with bright finish.



Four “Omanyt” alloy wheels, 9 J x 19, 255/40 R 19 tyres. Rims with bright finish.

Not in conjunction with spare wheel with standard size tyre. Not for W12/W12 with long wheelbase.



Four “Helios” alloy wheels, 8½ J x 19, 255/40 R 19 tyres. Painted Sterling Silver.

Not in conjunction with spare wheel with standard size tyre. Not for W12/W12 with long wheelbase.



Four “Serres” alloy wheels, 8½ J x 19, 255/40 R 19 tyres. Painted Sterling Silver. With 245/45 R 19 tyres on W12.

Also available as winter wheels with 245/45 R 19 V winter tyres. Not in conjunction with spare wheel with standard size tyre.



Four “Megara” alloy wheels, 9 J x 20, 275/35 R 20 tyres. Surface with polished finish.

Not in conjunction with spare wheel with standard size tyre. Not for W12/W12 with long wheelbase. The individual approval necessary for this alloy wheel will be effected entirely via “Die Gläserne Manufaktur” in Dresden and at no extra charge. Will be introduced at a later date. Your local Volkswagen Dealer will be pleased to give you details.

Our vehicles are equipped with summer tyres as standard. As of 1st May 2006 you are required by law in the Federal Republic of Germany to adapt the equipment of your vehicle, in particular the tyres, in wintry weather conditions. Your local Volkswagen Dealer will be pleased to advise you.

Paint finishes.

There are some 8,100 individual parts in the Phaeton. Every single one has been built to fully meet your expectations. Top-grade paints give these components their unmistakable appearance. A special 2-layer paint finish is available as an option: piano lacquer has exceptional depth and brilliance giving your Phaeton an inimitably exclusive appearance.



Campanella White
solid paint
R6



Arabesque Silver
metallic paint
7P

W12 W12 LR



Black
solid paint
A1

Also available as a Volkswagen Exclusive Phaeton piano lacquer paint finish (option at extra charge).



Beryllium Grey
metallic paint
M8

W12 W12 LR

■ standard (V6)

■ **W12** standard on W12

■ **V8** standard on V8

■ **V6 LR** standard on V6/V6 TDI/long wheelbase

■ optional extra

■ **W12 LR** standard on W12/long wheelbase

■ **V8 LR** standard on V8/long wheelbase



Cairo Grey
metallic paint
2N

W12 W12 LR



Silver Leaf
metallic paint
7B



Mazeppa Grey
metallic paint
N8

Also available as a Volkswagen Exclusive Phaeton piano lacquer paint finish (option at extra charge).

W12 W12 LR



Deep Black
pearl effect paint
2T

Also available as a Volkswagen Exclusive Phaeton piano lacquer paint finish (option at extra charge).

W12 W12 LR



Reflex Silver
metallic paint
8E

W12 W12 LR



Luna Blue
pearl effect paint
S5

Also available as a Volkswagen Exclusive Phaeton piano lacquer paint finish (option at extra charge).

W12 W12 LR



Serpentino Grey
metallic paint
1V

W12 W12 LR



Mocca Anthracite
pearl effect paint
3Q

W12 W12 LR

Decorative inserts and seat upholstery.

What we are unable to put into words, we express in fine wood, cloth with the appearance of cashmere – and in fabulously soft, durable leather, refined in the course of 40 different processes, and with seams set by hand.

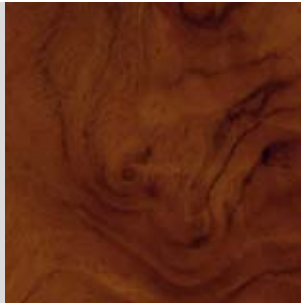
“Eucalyptus”
fine wood decor
7TE



“Vavona”
fine wood decor
5TW



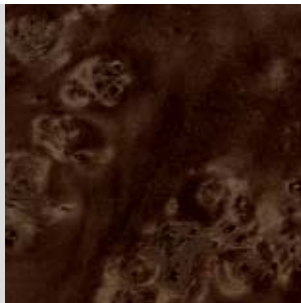
“Burr Walnut”
fine wood decor
5MG



Anthracite
“Pearl” cloth upholstery
EX

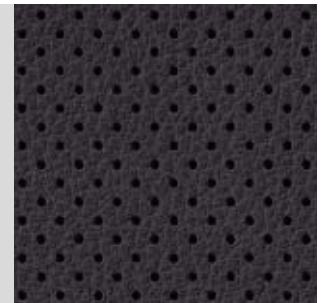


“Poplar Grain”
fine wood decor
5MC



Not in conjunction with Sevilla leather.

Anthracite
“Vienna Classic Style” leather seat upholstery
LA



Standard on 4-seater.

W12 **W12 LR** **V8 LR** **V6 LR**

standard (V6)

W12 standard on W12

V8 standard on V8

optional extra

W12 LR standard on W12/long wheelbase

V8 LR standard on V8/long wheelbase

V6 LR standard on V6/V6 TDI/long wheelbase

Corn Silk Beige
"Vienna Classic Style" leather seat upholstery
WG

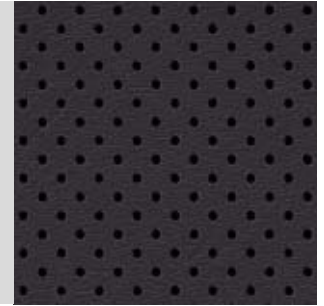
Standard on 4-seater.

W12 W12 LR V8 LR V6 LR



Anthracite
"Sensitive Classic Style" leather seat upholstery
TC

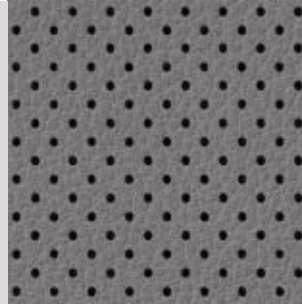
Corn Silk Beige
"Sensitive Classic Style" leather seat upholstery
UZ



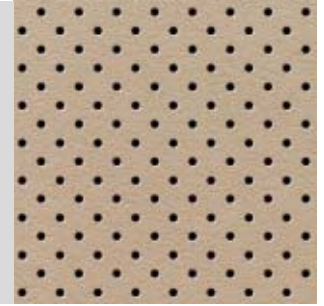
Crystal Grey
"Vienna Classic Style" leather seat upholstery
LB

Standard on 4-seater.

W12 W12 LR V8 LR V6 LR



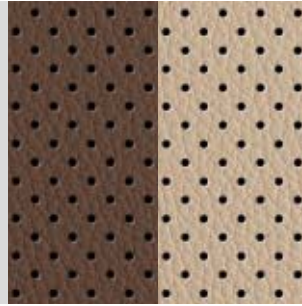
Crystal Grey
"Sensitive Classic Style" leather seat upholstery
TD



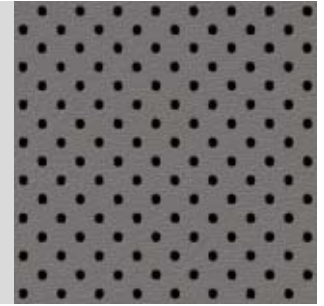
Sevilla
"Vienna Classic Style" leather seat upholstery
PL/PN

Standard on 4-seater.

W12 W12 LR V8 LR V6 LR



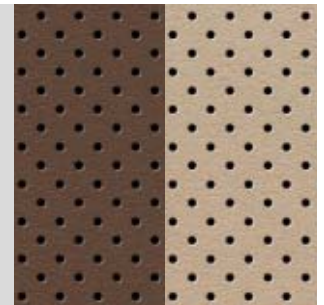
Sevilla
"Sensitive Classic Style" leather seat upholstery
PM/PP



Sun Beige
"Vienna Classic Style" leather seat upholstery
LC

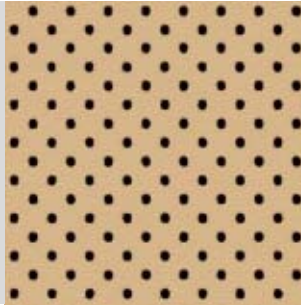
Standard on 4-seater.

W12 W12 LR V8 LR V6 LR



The illustrations on these pages can only be regarded as a general guide. The printing process cannot render the paintwork, fabrics, leather and wood with absolute accuracy.

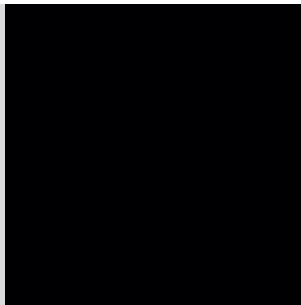
Sun Beige
"Sensitive Classic Style" leather seat upholstery
TE



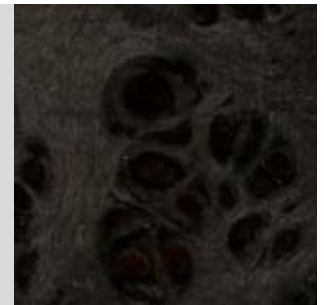
Volkswagen Exclusive decorative inserts and seat upholstery.

Volkswagen Exclusive features offer select wood inserts and leather trim for your Phaeton – in colours and materials that are, in the best sense of the word, out of the ordinary for cars. These enable you to further refine and customise the interior fittings.

Black Piano Lacquer
fine wood decor
5TL



Black Poplar Grain
fine wood decor
7TA



standard (V6)

W12 standard on W12

V8 standard on V8

V6 LR standard on V6/V6 TDI/long wheelbase

optional extra

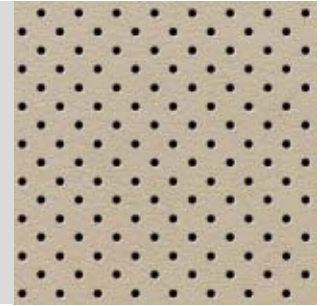
W12 LR standard on W12/long wheelbase

V8 LR standard on V8/long wheelbase

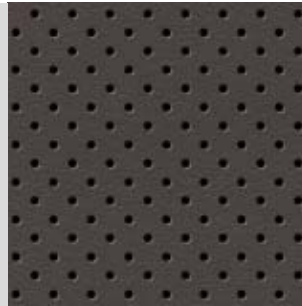
Cameo
"Sensitive Classic Style" leather seat upholstery
OJ



Snow Beige
"Sensitive Classic Style" leather seat upholstery
IL



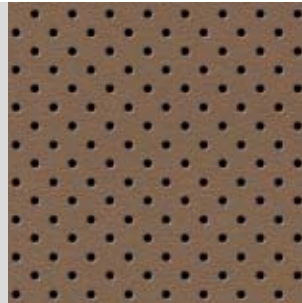
Diamante
"Sensitive Classic Style" leather seat upholstery
OF



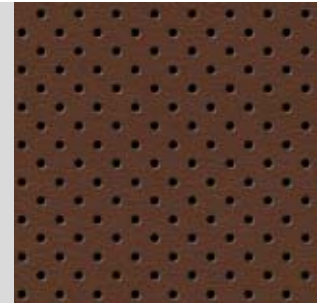
Sun Beige/Anthracite
"Sensitive Classic Style" leather seat upholstery
OC



Nougat
"Sensitive Classic Style" leather seat upholstery
OG



Tobacco
"Sensitive Classic Style" leather seat upholstery
OD



Combinations of colours.

Seat upholstery/
piping
↓

Headlining
↓

Carpeting
↓

“Pearl” cloth upholstery

Anthracite/Anthracite (EX)

Crystal Grey⁶⁾

Anthracite

“Vienna Classic Style” leather trim^{2), 3)}

Anthracite/Anthracite (LA)

Crystal Grey⁶⁾

Anthracite

Corn Silk Beige/Corn Silk Beige (PN)

Corn Silk Beige

Natural Brown

Corn Silk Beige/Corn Silk Beige (WG)

Corn Silk Beige

Corn Silk Beige

Crystal Grey/Crystal Grey (LB)

Crystal Grey⁶⁾

Crystal Grey

Sevilla/Sevilla (PL)

Corn Silk Beige

Natural Brown

Sun Beige/Sun Beige (LC)

Sun Beige

Sun Beige

“Sensitive Classic Style” leather trim³⁾

Anthracite/Anthracite (TC)

Crystal Grey⁶⁾

Anthracite

Corn Silk Beige/Corn Silk Beige (PP)

Corn Silk Beige

Natural Brown

Corn Silk Beige/Corn Silk Beige (UZ)

Corn Silk Beige

Corn Silk Beige

Crystal Grey/Crystal Grey (TD)

Crystal Grey⁶⁾

Crystal Grey

Sevilla/Sevilla (PM)

Corn Silk Beige

Natural Brown

Sun Beige/Sun Beige (TE)

Sun Beige

Sun Beige

Volkswagen Exclusive “Sensitive Classic Style” leather trim³⁾

Cameo/Anthracite (OJ)

Anthracite

Anthracite

Diamante/Anthracite (OF)

Crystal Grey⁶⁾

Anthracite

Nougat/Corn Silk Beige (OG)

Corn Silk Beige

Corn Silk Beige

Snow Beige/Anthracite (IL)

Anthracite

Anthracite

Sun Beige-Anthracite/Sun Beige (OC)

Sun Beige⁶⁾

Anthracite

Tobacco/Anthracite (OD)

Crystal Grey⁶⁾

Anthracite

● design recommendation ○ combination (not a design recommendation) – not available

1) Standard on W12. 2) Standard on W12, 4-seaters and all models with long wheelbase. 3) Option at extra charge. 4) Also available with Volkswagen Exclusive Phaeton piano lacquer paint finish (option at extra charge). 5) As “Piano Black” piano lacquer. 6) Interior trim: also with Anthracite headlining.

← Instrument panel top/ bottom	← Campanella White R6	← Black A1 ^(4), 5)	← Arabesque Silver Metallic 7P ^(1), 3)	← Beryllium Grey Metallic M8 ^(1), 3)	← Cairo Grey Metallic 2N ^(1), 3)	← Mazeppa Grey Metallic N8 ^(1), 3), 4)	← Reflex Silver Metallic 8E ^(1), 3)	← Serpentino Grey Metallic 1V ^(1), 3)	← Silver Leaf Metallic 7B ^(1), 3)	← Deep Black Pearl Effect 2T ^(1), 3), 4)	← Luna Blue Pearl Effect S5 ^(1), 3), 4)	← Mocca Anthracite Pearl Effect 3Q ^(1), 3)
Anthracite/Anthracite	●	●	●	●	●	●	●	●	●	●	●	●
Anthracite/Anthracite	●	●	●	●	●	●	●	●	●	●	●	●
Brown/Corn Silk Beige	●	●	●	●	●	●	●	●	●	●	●	●
Brown/Corn Silk Beige	●	●	●	●	●	●	●	●	●	●	●	●
Anthracite/Crystal Grey	●	●	-	●	-	●	●	●	●	●	●	●
Brown/Sevilla	●	●	●	●	●	●	●	●	●	●	●	●
Brown/Sun Beige	●	●	●	●	●	●	-	●	●	●	●	●
Anthracite/Anthracite	●	●	●	●	●	●	●	●	●	●	●	●
Brown/Corn Silk Beige	●	●	●	●	●	●	●	●	●	●	●	●
Brown/Corn Silk Beige	●	●	●	●	●	●	●	●	●	●	●	●
Anthracite/Crystal Grey	●	●	-	●	-	●	●	●	●	●	●	●
Brown/Sevilla	●	●	●	●	●	●	●	●	●	●	●	●
Brown/Sun Beige	●	●	●	●	●	●	-	●	●	●	●	●
Anthracite/Anthracite	○	●	●	●	●	●	○	●	●	●	●	●
Anthracite/Anthracite	○	●	●	-	○	○	●	●	●	●	○	●
Brown/Corn Silk Beige	○	●	-	-	○	●	-	●	●	●	-	●
Anthracite/Anthracite	●	●	○	●	○	●	●	●	●	●	●	●
Anthracite/Anthracite	●	●	●	●	●	●	-	●	●	●	●	●
Anthracite/Anthracite	●	●	○	●	●	●	●	●	●	●	○	●

Some of the vehicles shown in this brochure are equipped with options at extra charge. All details of equipment and technical data are based on the features of the German market and are in accordance with the information available at the time of going to print. Your local Volkswagen Dealer will be pleased to give you details of the differences in your specific country. Subject to change without notice. 4MOTION® and TDI® are registered marks of Volkswagen AG and other companies in the Volkswagen Group in Germany and in other countries. The fact that a mark is not shown with an ® sign in this document cannot be interpreted to mean that this mark is not a registered mark and/or that this mark could be used without prior approval in writing from Volkswagen Aktiengesellschaft. Volkswagen provides for the take-back and recycling of end of life vehicles. All Volkswagens can therefore be recycled in an environment-friendly way and, subject to fulfilment of legal prerequisites, can be returned free of charge. You can obtain further details of this from your local Volkswagen Dealer, on our Internet website www.volkswagen.de and under the telephone number 0800 – VOLKSWAGEN (0800 – 86 55 79 24 36) which is free of charge in the Federal Republic of Germany. iPod and iPhone are registered marks of Apple Computer International.

Die Gläserne Manufaktur.



The fascination of building cars: Die Gläserne Manufaktur (The Transparent Factory). You have decided on a Phaeton – why not plan your first encounter at the place where it is manufactured almost entirely by hand? See for yourself how Volkswagen’s premium car comes into being, make the most of the personal advice available to you, and experience for yourself the fascinating architecture of this special manufacturing site.

We are sure that your visit to “Die Gläserne Manufaktur” will make a lasting impression on you and that it will establish a special bond with the Phaeton for you. Your trip will give you the opportunity to see Dresden. Due to its location on the banks of the Elbe River, Dresden is also referred to as “Florence of the Elbe”. You can therefore combine collecting your new Phaeton with a visit to Dresden, a city of art and culture.

The date for taking delivery of your new Phaeton need not be your first encounter in this long-standing relationship. If you wish to plan the purchase of your new Phaeton and find out more about how it is made and the special qualities of your future car, please contact your local Volkswagen Dealer with your order. They will contact “Die Gläserne Manufaktur” for you. This is where you will experience unique customer care and the undivided attention of your personal customer manager who gives individual, competent advice and, if you wish, accompanies you on a test drive.

You will be welcomed at “Die Gläserne Manufaktur” in the lounge of the customer lobby, an area reserved exclusively for you. This is followed by a visit to the Studio to view fabrics, leather, paint, wood and wheels – a display only available to you there where the Phaeton is assembled – which enables you to configure your individual Phaeton straightaway. Here again, your customer manager will be pleased to help you.

It is also possible to collect vehicles at the Autostadt in Wolfsburg. Please refer to www.autostadt.de for details. Customers outside the Federal Republic of Germany: please get in touch with a Volkswagen Dealer in your country to enquire about the possibility of collecting a vehicle and to receive the relevant details.



During a tour of the production area, you can watch the assembly of a Phaeton step by step and have it explained to you by your customer manager. You will progress along the different stages of the production process on a maple wood parquet floor. The experts who assemble the Phaeton wear white overalls and gloves. If you wish, you can follow the assembly process of your Phaeton first hand and see how the equipment you have selected is put together in your individual Phaeton.

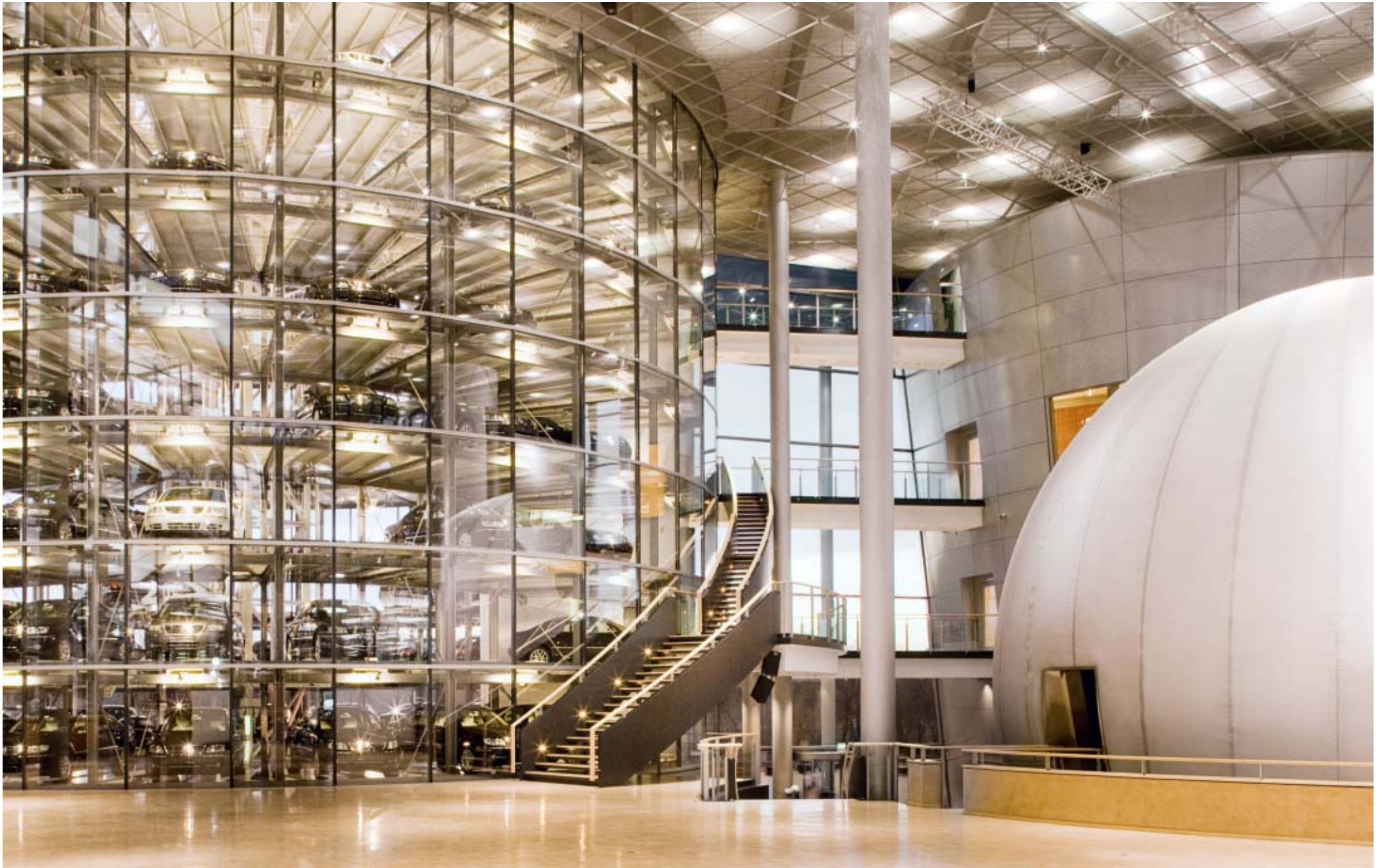
The vehicle handover ceremony is a special highlight when you collect your vehicle. After the presentation in the special atmosphere of the Salon, the operation of your new vehicle will be explained to you in detail – before you leave the customer lobby and your new vehicle exchanges the parquet flooring of “Die Gläserne Manufaktur” for cobblestones and asphalt.

Experience the world in your new Phaeton. And feel free to revisit the place of your first encounter – “Die Gläserne Manufaktur” in Dresden – as often as you please. We also invite you to visit some of the events offered at “Die Gläserne Manufaktur”. They include everything from concerts held as part of a co-operation with the Saxony State Orchestra Dresden (Sächsische Staatskapelle Dresden), the Dresden Music Festival and the Moritzburg Festival to selected theatre, dance and ballet productions or readings and exhibitions. You may wish to include one of our cultural events when you take delivery of your vehicle – should there be an event of interest to you at that time. Alternatively, you are welcome to take advantage of our programme of events whenever you wish to return to Dresden and “Die Gläserne Manufaktur”.

Please refer to our customer magazine, skriptmanuktura, for all the latest information on “Die Gläserne Manufaktur”, the Phaeton, and our events. The magazine can be ordered free of charge from your Volkswagen Dealer or at www.glaesernemanufaktur.de where you can also subscribe to the online newsletter issued by “Die Gläserne Manufaktur”.







The Mobility package.

The Phaeton Premium Package. Time is one of the greatest luxuries there is nowadays. The PremiumPackage for the Phaeton saves time for you as it also relieves you of many tiresome tasks. Four comprehensive modules and a versatile credit card are included for you in this unique Service Package from Volkswagen Bank, Volkswagen Leasing and Volkswagen VersicherungsService. You do not have to see to the insurance, maintenance or organise legal formalities – all this is dealt with for you automatically.

“Premium” insurance rate. Take advantage of comprehensive “Premium” protection for all new Phaeton vehicles. This includes third party vehicle insurance with a sum insured of 100 million euros, comprehensive insurance riders, and cover for drivers. This compensates, for instance, for loss of earnings as the result of an accident or a pension reduction up to the sum of 1 million euros. In addition, the “Premium” insurance rate has extensive comprehensive and third party, fire and theft insurance including no claims discount protection and parking damage insurance.

The no claims discount protection gives you cover for one claim per year under third party and/or comprehensive insurance to protect you from an increase in your insurance premium. Parking damage insurance ensures that annoying parking damage not exceeding 500 euros on vehicles of up to 24 months old is repaired without loss of no claims discount and with a reduced excess payment. In addition, in the case of claims under comprehensive insurance in Germany, a comparable rented car is made available to you. In the event of a write-off within 24 months of the vehicle’s date of first registration, you are reimbursed with the price of the new vehicle. As you can see, Volkswagen VersicherungsService gives you, as a Phaeton driver, support with particularly extensive insurance cover.

Premium services module. The PremiumServices module covers all maintenance work and servicing for your Phaeton – from regular inspections with oil change, replacement of seal/filter to the regular replacement of wear and tear parts, and examination of the vehicle including exhaust emission testing by the vehicle testing authorities. Use of this module saves all leasing customers time and effort and, due to the fixed cost plan, money too.

Premium tyre module. Together with your new Phaeton you receive, in addition, four winter tyres on alloy rims. The seasonal tyre change at your Volkswagen Dealer is also included. We even undertake the correct storage of the second set of tyres – so that only your Phaeton is standing in your garage.

Premium fee and charges module. This Phaeton PremiumPackage module deals with all road tax and radio/TV licence fees for you. We make sure that the State receives its dues. Simply send us your road tax notification and think about something else – your next trip in your Phaeton for example.

Volkswagen VISA Card. The Volkswagen VISA card is your card for the greatest financial flexibility. Whether at home or abroad, enjoy the possibilities offered by cash-free transactions. Take advantage of valuable discounts and an attractive turnover bonus – to save hard cash!

1% when refuelling: simply pay with the Volkswagen VISA card at filling stations worldwide and receive a discount of 1%. So fill up and save.

5% for travel: book your holiday via the Volkswagen Bank travel centre and you receive 5% of the price back. This applies to package tours from all well-known travel firms with independent advisory service.

Up to 20% from Europcar: drive and save. Whether you hire a Cabriolet or a van for removals – you receive a discount of up to 20% for vehicles hired from Europcar.

Further information can be obtained via the Internet

www.volkswagenbank.de or by phone:

(0180) 322 42 22 (0.09 euro/minute from the DTAG landline;

max. 0.42 euro/minute from mobile phone networks),

from 8 a.m. to 8 p.m. Monday to Friday, and from 9 a.m. to 3 p.m. on Saturdays.

Phaeton financial services. A car that is so consistently tailored to the wishes and requirements of its owners naturally also offers a choice of individual finance plans. Either the Volkswagen Bank “ClassicCredit” or a leasing contract from Volkswagen Leasing. Leasing a vehicle has clear advantages: it leaves capital free; expenditure is calculable over a fixed period; and simply the possibility, through attractive conditions, to tie up less money and get more car – and just give the car back to your Volkswagen Dealer at the end of the contract. Whether your Phaeton is for private or business use: you will make the right decision with Volkswagen private or business car leasing.

We shall be pleased to answer any queries you may have concerning the Phaeton. Please phone **01802 – PHAETON (01802 – 742 38 66)** (0.06 euro/per call*).

Phaeton Service. Good service is virtually invisible but immediately there when needed. The services offered for the Phaeton are entirely in line with this. As the driver of a Phaeton many services are available to you, in addition to Volkswagen’s proven service, which more than do justice to what is expected of a luxury saloon. Service for the Phaeton starts there where you want it to. For example, there is no need to leave the house for a workshop appointment. Our exclusive collection and delivery service is only a phone call away. Your Volkswagen Dealer then collects your Phaeton from your home and brings it back to you again when work has been completed.

If you wish, a replacement car from your Volkswagen Dealer is also available so that you remain mobile in the meantime. Driving a Phaeton means never being on your own. Should you have any queries concerning your Phaeton, just call the hotline and the Phaeton Service personnel will be pleased to answer them.

Concrete help is also given. There is a network in more than 20 European countries to help you in an emergency and give assistance in dealing with all eventualities. For instance, if you lose your car key: we will arrange for you to receive a previously deposited second key as quickly as

possible. The same applies to urgently needed medication or important documents. Should your Phaeton have a breakdown or be involved in an accident in another country within Europe, simply call your personal hotline. Phaeton Service immediately deals with everything needed for speedy processing in more than 20 European countries: on-the-spot repairs for the Phaeton, a replacement car, or hotel accommodation for up to five days for you and those travelling with you. If necessary, we help you to find important contact persons such as a solicitor, interpreter, doctor or other experts. As you can see – a staff of experts, helpers and advisers is there for you around the clock so that you can concentrate entirely on the essentials: relaxed, comfortable and problem-free travel.

Volkswagen driving experience. As the name implies, Volkswagen driving experience stands for experience that you can make use of in the course of everyday driving. The training offered ranges from driving and safety training to exclusive on-road training where you are given tips by professional instructors. Advanced safety training teaches you how to react correctly in dangerous situations and, during winter training, you can learn how to keep your vehicle under control on slippery surfaces. However, Volkswagen driving experience also stands for lasting memories of special event travel. We shall be glad to give you details of the complete Volkswagen driving experience programme.

Please contact us by phone on our free hotline in Germany **0800 – 893 83 68** or via the Internet **www.volkswagen-driving-experience.de**.

*From the landline network of Deutsche Telekom AG; max. 0.60 €/per call from mobile phone networks. The services offered on these pages apply to the German market only. Your local Volkswagen Dealer will be pleased to give you details of the differences in your specific country.



0F2.1196.16.18 · Printed in Germany
Subject to change without notice
Issue: October 2010

Internet: www.volkswagen.de

■

■

Your Volkswagen Dealer

■